

CHAPTER IV

EDUCATIONAL STATUS OF TRIBAL POPULATION

4.1 Introduction

In India the scheduled tribes are the most geographically and socially isolated and economically marginalized community. India advocates inclusive growth but owing to lack of educational development, the scheduled tribes is not becoming the part of this inclusive growth. Post independence a lots of concentrated efforts and initiatives, have been made to uplift the scheduled tribes (Brahmanandam & Bosu, 2016). As education is indispensable for human resource development and imparts knowledge, skill and character; a lots of efforts has been made to make them educationally sound. But after all these, the improvement status of the tribals is not very impressive. Here in this chapter, a critical analysis has been done on educational status of the tribal population in Siliguri Sub-division.

4.2 Literacy Status

4.2.1 Tribal & Non tribal Literacy Status

Literacy rate is a most essential indicator of any country's human development. Historically in India tribal literacy rate has always been far lower than the other communities. It is one of the main reasons behind the poor human development status of tribal population compare to the other communities. As per census 2011, the literacy rate for scheduled tribe population in India is 58.95 percent, which is way lower than the literacy rate of non tribal population (74.29 percent). Even the percentage is much lower than the overall literacy rate in India (74.04 percent). Both in the Darjiling district and Siliguri Sub-division the literacy rate for tribal and non tribal follow the same trend as it follows national scale. Table 4.1 shows the tribal literacy rate in Siliguri Sub-division is 59.99 percent and the literacy rate for non tribal is 78.27 percent. A huge gap in terms of literacy rate between tribal and non tribal is very much prominent. To study the comparative literacy status between tribal and non tribal, Coefficient of Equality has been derived. The mathematical expression for Coefficient of Equality is:

$$\text{Coefficient of Equality (CoE)} = \frac{\text{Tribal Literacy Rate}}{\text{Non Tribal Literacy Rate}} \times 100$$

The value of Coefficient of Equality nearer to 100 indicates less inequality in terms of literacy rate between tribal and non tribal population. And a distant value to 100 shows higher inequality.

This can be also interpreted like, the number of tribal literate against every 100 literate non tribal population.

The table 4.1 shows CoE value for the Sub-division is 76.64 which is not very impressive. Block-wise data shows Kharibari C.D. Block has the lowest CoE (74.30) and the highest CoE can be seen in Phansidewa C.D Block (86.22). This indicates that in Kharibari C.D. Block lowest number of literate tribal population against every 100 literate non tribal population can be seen. And in Phansidewa block the number is highest in the Sub-division. Though the non tribal literacy rate in Phansidewa block (67.30 percent) is lowest among all the blocks in the Sub-division. This is why being the most backward block in terms of literacy in the Sub-division the Phansidewa C.D. Block has highest CoE. Analyzing the data further, it can also be seen that the situation is more alarming in rural areas than urban. It is to be noted that in the study area there are 14 urban centers and out of which none belongs to Phansidewa C.D Block. It is prominent that in urban centers literacy percentage of both tribal and non tribal is comparatively higher than rural areas. So, this lack of urban literacy support is one of the main reasons that Phansidewa block gets the tag of the worst overall literacy percentage in the study area.

In rural the tribal literacy rate is 58.53 percent and non tribal literacy rate is 70.51 percent. There is a gap of almost 12 percent point. The CoE value in rural areas (83.00) is far lesser than that of the urban areas (94.51). In all the C.D. Blocks under the study area, the CoE value for urban population is above 90, which is quite good. The data for male and female show the CoE value for male is comparatively higher than the female in the Sub-division. The value of CoE for male is 82.49 and for female it is only 70.67. This shows lesser involvement of tribal females than non tribals in education. It is also to be noted that considering all the parameters as per table 4.1, in Kharibari C.D Block the tribal literacy condition comparing to that of the non tribal population is the worst among all the blocks in Siliguri Sub-division. The literacy rates of tribal and non tribal population in Siliguri MC (Part) are almost same. The tribal literacy rate is 83.97 percent and the non-tribal literacy rate is 86.46 percent. The value of CoE shows for every 100 literate non tribal population there are almost 98 literate tribal population in Siliguri MC (Part). The modernization of tribal population with the other societies, availing the modern infrastructures, better income resources play the key roles for tribal population to match up with non-tribal population in the Siliguri MC (Part) .

Table 4.1 Literacy Status of Tribal and Non-Tribal Population, 2011

Name of the Block	Tribal Literacy rate			Non tribal literacy rate			Coefficient of equality		
	Total	Male	Female	Total	Male	Female	Total	Male	Female
Siliguri Sub-Div.	59.99	69.31	50.99	78.27	84.02	72.16	76.64	82.49	70.67
Rural	58.53	68.09	49.30	70.51	78.19	62.33	83.00	87.09	79.10
Urban	80.60	86.53	74.88	85.28	89.30	81.01	94.51	96.90	92.43
Matigara	64.39	73.78	55.47	76.38	82.91	69.40	84.29	88.99	79.93
Rural	63.06	72.78	53.80	73.90	81.03	66.05	85.34	89.82	81.45
Urban	79.93	85.85	74.58	80.91	86.47	75.26	98.79	99.28	99.10
Naxalbari	61.97	71.51	52.67	78.72	85.27	71.68	78.72	83.87	73.48
Rural	60.02	69.82	50.46	72.79	80.49	64.83	82.45	86.74	77.84
Urban	77.72	85.14	70.48	84.96	90.08	79.21	91.47	94.52	88.99
Phansidewa	58.03	67.26	49.20	67.30	74.87	59.25	86.22	89.83	83.04
Rural	58.03	67.26	49.20	67.30	74.87	59.25	86.22	89.83	83.04
Urban	00	00	00	00	00	00	NA	NA	NA
Kharibari	52.63	62.76	42.61	70.84	79.03	62.21	74.30	79.41	68.49
Rural	52.54	62.68	42.50	69.43	78.02	60.35	75.68	80.33	70.43
Urban	69.89	80.95	60.78	79.79	85.46	73.89	87.60	94.73	82.26
Siliguri MC (Part)	83.97	88.33	79.64	86.46	89.84	82.88	97.12	98.32	96.10

Source: Census of India, 2011

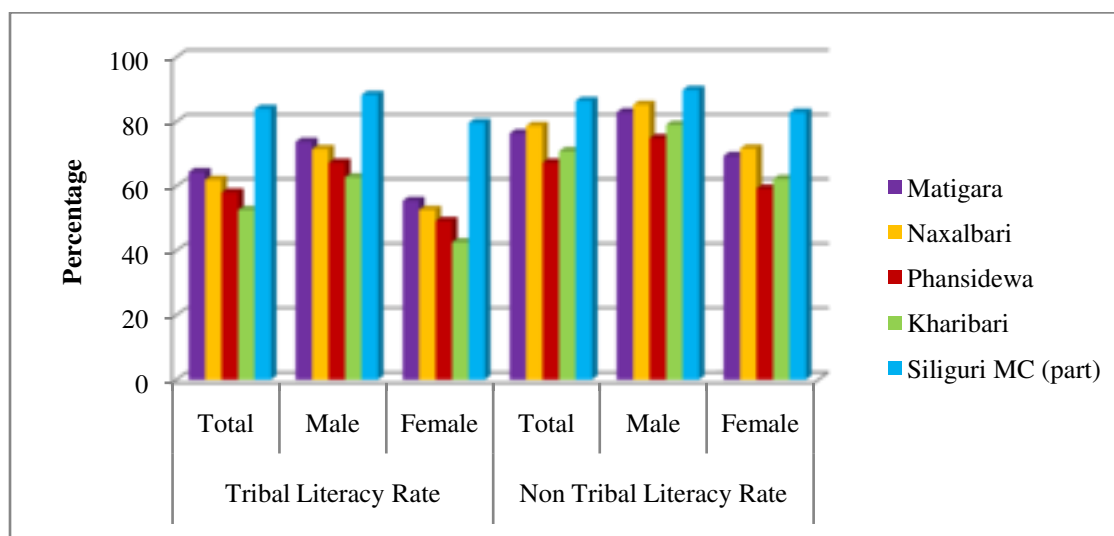


Fig. 4.1: Tribal and Non-Tribal Literacy Rate in Siliguri Sub-division, 2011

4.2.2 Gender Gap in Tribal Literacy, 2001 & 2011

Table 4.2 shows the comparative study of tribal literacy according to census 2001 and 2011. This also indicates the improvement status in tribal literacy from Census 2001 to 2011. To find the gender gap in literacy rate, Gender Parity Index (GPI) has been derived for both the census years. The mathematical expression of GPI is:

$$\text{Gender Parity Index (GPI)} = \frac{\text{Female Literacy Rate}}{\text{Male Literacy Rate}}$$

The value of GPI nearer to 1 indicates lesser gender gap and GPI nearer to 0 shows higher gender gap in literacy rate.

From table 4.2 it can be seen that overall tribal literacy rate in Siliguri Sub-division has grown up to 59.99 percent in census 2011 from that of the 41.87 percent in 2001. This growth rate is quite commendable. The most important thing is the GPI of 0.56 in 2001 has gone up to 0.74 in 2011. This reflects females are gradually inclining towards education in the study area. In the rural areas this change is showing a prominent mark. The GPI in rural areas in the Sub-division has gone 0.55 to 0.72, a jump of 17 points. The government initiatives and different educational schemes in a mission mode play the major roles to this huge improvement. Sarva Siksha Abhiyan (SSA) is a major catalyst to this improvement. The SSA was launched in 2001-2002 by central government in partnership with the state governments with the objectives of universal access and retention of education, development of educational infrastructures, bridging of genders and different categories gap in education and enhancement of educational level of children. To do so the government has also enacted Right to Educational Act 2009 to happen it possible for every children to access free education up to elementary level in schools (SSA, 2017). Block-wise in Kharibari C.D. Block the highest growth rate of literacy percentage has been observed. The literacy percentage in this block has been grown up to 52.63 percent in 2011 from 33.09 percent in 2001 at a growth rate of 59.05 percent. The highest rural literacy growth rate can also be seen in Kharibari C.D Block (58.77 percent). Interesting fact is only in Matigara C.D. Block the urban tribal literacy rate sees a de-growth in 2011 census from that of 2001. The urban tribal literacy percentage has gone down to 79.93 percent in 2011 from 86.52 percent in 2001. A de-growth of almost 7 percent. The main reason behind this is migration of illiterate tribal population. The urban tribal population of Matigara C.D. Block as per 2001 census was only 160. The number went up to 2004 in 2011 census. This can happen due to migration only. As per 2011 the highest GPI is observed in Matigara C.D. Block (0.75). Although the Kharibari block shows the highest literacy growth, the GPI is still lowest there. The GPI of Kharibari C.D. Block is only 0.68 and this needs to be improved. In Phansidewa and Kharibari C.D. Blocks the female literacy rate is still below 50 percent. In Siliguri MC (Part) the literacy rate has grown up to 88.33 percent in 2011 from 77.35 percent in 2001. The male and female literacy growth rates are almost same. Both grow at a rate of almost 1.10 percent. The GPI of it is 0.90 which is greater than the overall urban tribal literacy rate of the Sub-division.

Table 4.2 Literacy Rate of Scheduled Tribe Population in Siliguri Sub-division, 2001 and 2011

Name of the Block	2001			GPI	2011			GPI
	Total	Male	Female		Total	Male	Female	
Siliguri Sub-div.	41.87	53.49	30.15	0.56	59.99	69.31	50.99	0.74
Rural	40.69	52.48	28.80	0.55	58.53	68.09	49.30	0.72
Urban	76.86	82.89	70.64	0.85	80.60	86.53	74.88	0.87
Matigara	43.51	55.54	31.28	0.56	64.39	73.78	55.47	0.75
Rural	43.11	55.17	30.86	0.56	62.81	66.09	59.90	0.74
Urban	86.52	94.52	77.94	0.82	79.93	85.85	74.58	0.87
Naxalbari	41.77	54.49	28.99	0.53	61.97	71.51	52.67	0.74
Rural	41.05	53.89	28.13	0.52	60.02	69.82	50.46	0.72
Urban	71.94	79.25	64.66	0.82	77.72	85.14	70.48	0.83
Phansidewa	42.08	53.01	31.09	0.59	58.03	67.26	49.20	0.73
Rural	42.08	53.01	31.09	0.59	58.03	67.26	49.20	0.73
Urban	00	00	00	00	00	00	00	00
Kharibari	33.09	45.66	20.37	0.45	52.63	62.76	42.61	0.68
Rural	33.09	45.66	20.37	0.45	52.54	62.68	42.50	0.68
Urban	00	00	00	00	69.89	80.95	60.78	0.75
Siliguri MC(Part)	77.35	82.99	71.52	0.86	83.97	88.33	79.64	0.90

Source: Census of India, 2001 & 2011

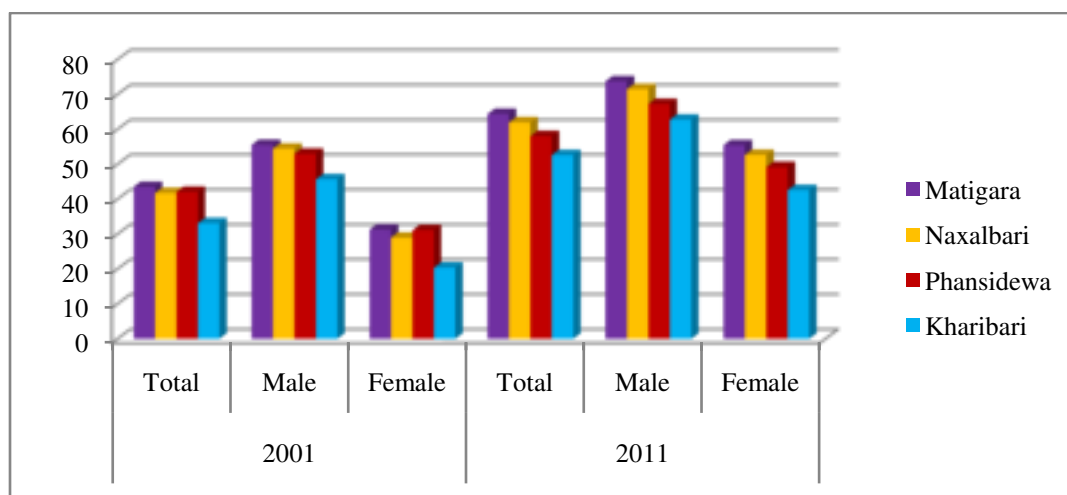


Fig. 4.2: Block-wise Literacy Rate of Scheduled Tribe Population in Siliguri Sub-division 2001 & 2011

4.2.3 Gender Disparity in Tribal Literacy

Table 4.3 and table 4.4 shows the field survey data in the study area for tribal literacy on various parameters. The analysis of these tables helps to understand the literacy status of tribal male female as per rural and urban. And finally this will lead to derive the Modified David Sopher's Disparity Index (modified by Prof. Amitabh Kundu and Rao in 1983). The Mathematical expression of this index is:

$$\text{Disparity Index (DI)} = \log \frac{x_1}{x_2} + \log \frac{200-x_2}{200-x_1}$$

Here,

X1 = Male Literacy Rate

X2 = Female Literacy Rate

The value of DI nearer to 1 indicates higher disparity between male and female literacy rate and the value nearer to 0 shows lower disparity of the same.

Table 4.3 reflects that the overall tribal female literacy rate is lower than the tribal male literacy rate in the Sub-division. Only 54.86 percent tribal females are literate in comparison to 65.17 percent male literate in the Sub-division. The Disparity Index shows that in both rural and urban the literacy gap is almost same. In rural the DI value is 0.106 and in urban the index value is 0.107.

Table 4.3 Disparity Index in Literacy Rate of Scheduled Tribe Population

Name	Male	Female	Disparity Index
Rural	63.53	53.48	0.106
Urban	78.05	66.67	0.107
Total	65.17	54.86	0.107

Source: Field Survey 2019-20

The block-wise data shows the highest literacy disparity in Matigara C.D Block (0.157) and the lowest in Kharibari C.D.Block (0.069). The DI index shows that in Atharokhai GP (0.240) highest disparity in male and female literacy can be seen and this will be followed by Patharghata GP (0.210).The lowest literacy disparity between male and female is in Hetmuri (0.023) GP under Phansidewa block and followed by Upper Bagdogra GP (0.025) and Raniganj Panisali (0.029). Although in both Hetmuri and Raniganj Panisali the literacy of male and female are lower than that of the respective literacy percentage of the Sub-division

Table 4.4 Gram Panchayat-wise Disparity in Literacy Rate of Scheduled Tribe Population

Name of the Block/GP	Literacy Rate		Disparity Index
	Male	Female	
Matigara	66.09	51.14	0.157
Champasari	62.28	52.17	0.108
Matigara I	84.21	62.50	0.204

Name of the Block/GP	Literacy Rate		Disparity Index
	Male	Female	
Matigara II	75.00	62.50	0.121
Atharokhai	73.33	50.00	0.240
Patharghata	64.86	45.71	0.210
Naxalbari	67.81	58.26	0.096
Naxalbari	71.79	60.00	0.116
Upper Bagdogra	67.74	65.22	0.025
Hatighisa	67.50	56.10	0.116
Gossaipur	57.14	46.15	0.125
Lower Bagdogra	63.16	53.33	0.104
Maniram	73.33	56.41	0.168
Phansidewa	59.24	50.32	0.098
Hetmuri	57.00	54.84	0.023
Bidhan Nagar I	66.67	49.09	0.187
Bidhan Nagar II	53.73	48.44	0.060
Chathat Bangsao	51.61	40.00	0.143
Ghoshpukur	68.18	53.06	0.156
Jalash Nijamtara	54.55	44.44	0.118
Phasidewa	69.23	50.00	0.201
Kharibari	62.30	55.68	0.069
Binnabari	64.86	52.38	0.131
Buraganj	63.79	55.17	0.090
Kharibari Panisali	70.37	63.64	0.066
Raniganj Panisali	56.52	53.85	0.029

Source: Calculated By the Researcher

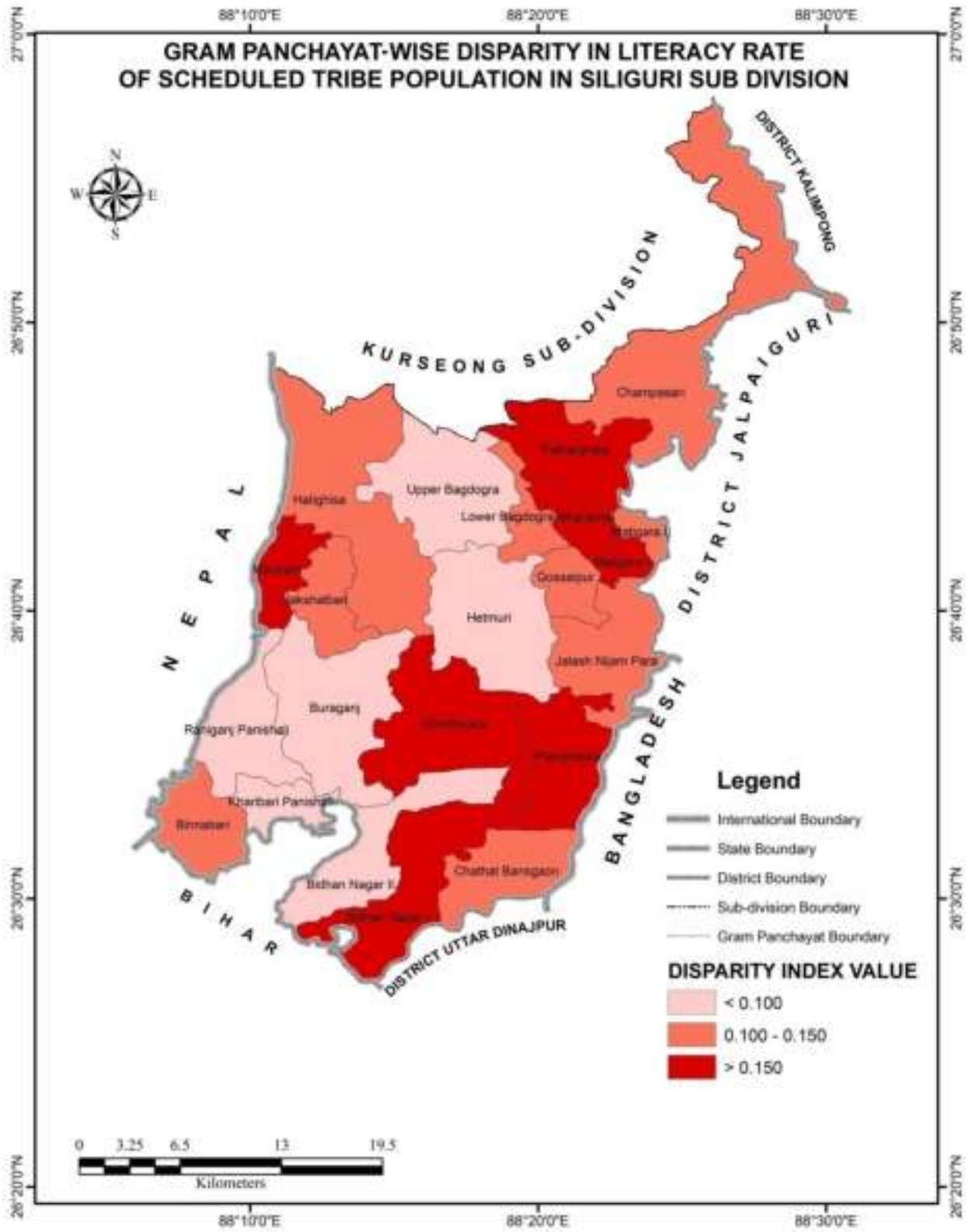


Fig. 4.3

Now, if the age-wise literacy rate data is analyzed, it reflects a huge improvement in recent times among tribal population. During field survey it has been observed that 91.37 percent of the 7-14 years of age group tribal population is literate. And for population of age group 15-29 years of age the percentage is 82.42 percent. This shows with time literacy consciousness among tribal population is also improving rapidly. In case of tribal female literacy, the improvement is more rapid than male. Table 4.5 shows the literacy percentage for tribal male and female of age group 15-29 years of age are 87.26 percent and 77.70 percent respectively. Whereas the percentage of the same of age group 7-14 years of age are 92.57 percent and 90.00 percent respectively. In urban areas 100 percent of both male and female of age group 7-14 years of age are literate. In rural the percentages of the same age group are 92.20 percent and 89.68 percent respectively for male and female. The data also shows that almost $\frac{3}{4}$ th of the total tribal literate population is of age group of below 30 years of age. Only around 25 percent of the tribal population equal or above 30 years of age is literate.

Table 4.5 Scheduled Tribe Literacy Rate According to Age Group

Age Group	Rural			Urban			Total		
	Total	Male	Female	Total	Male	Female	Total	Male	Female
7-14	91.01	92.20	89.68	100.00	100.00	100.00	91.37	92.57	90.00
15-29	80.64	85.56	75.97	95.24	98.25	91.67	82.42	87.26	77.70
30-44	40.20	51.26	29.96	57.14	70.00	48.28	41.73	52.71	31.82
45-59	21.98	28.19	14.52	47.54	51.43	42.31	26.65	32.61	19.33
60 & above	9.45	13.70	3.70	37.50	50.00	25.00	11.11	15.58	5.17

Source: Field Survey 2019-20

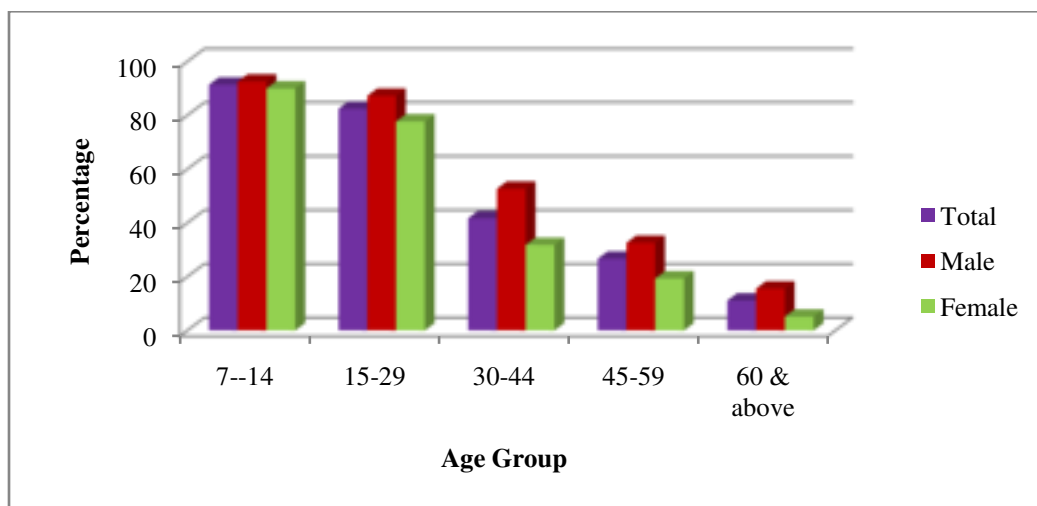


Fig. 4.4: Scheduled Tribe Literacy Rate according to Age Groups

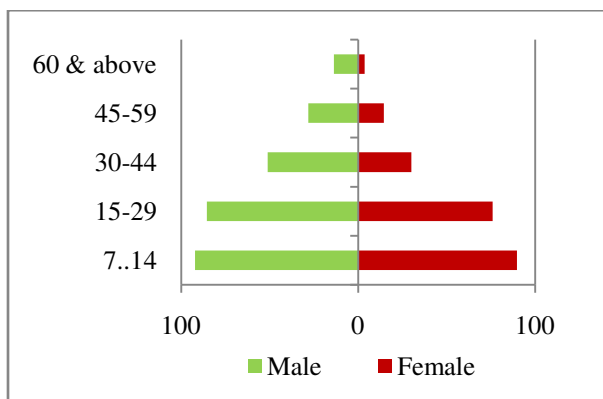


Fig. 4.5: Rural Literacy Rate according to Age Groups

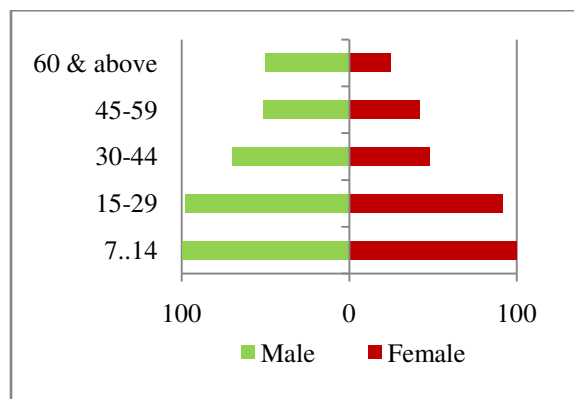


Fig. 4.6: Urban Literacy Rate According to Age Groups

Block-wise data shows (Table 4.6) other than Phansidewa C.D. Block, all other blocks have tribal literacy rate of age group 7-14 years of age, higher than 94 percent. Only in Phansidewa C. D. Block the literacy rate for the same age group is only 84.69 percent. Although consistent improvement have been shown by all the blocks. Table 4.6 shows a rapid literacy rate improvement between different age groups in recent times in all the blocks for age group of 7-14 years of age the female literacy rate is almost equal to male literacy rate but among 30-44 years of age group population the gender gap in literacy is very much prominent this shows a huge improvement towards gender inequality in literacy. People of this sub division are giving equal importance to female literacy with male. Government initiatives like free education to all up to class 8, Mid-day Meal, class-wise scholarships are acting like catalyst to this improvement.

Table 4.6 Block-wise Scheduled Tribe Literacy Rate According to Age Group

Name of the Blocks	7-14			15-29			30-44		
	T	M	F	T	M	F	T	M	F
Matigara	95.35	96.00	94.44	79.01	88.64	69.89	44.72	55.36	35.82
Naxalbari	94.92	96.67	93.10	91.16	96.70	85.56	43.93	50.98	37.50
Phansidewa	84.69	86.00	83.33	76.19	78.81	73.88	37.65	52.33	21.05
Kharibari	94.03	94.44	93.55	80.00	82.86	77.14	34.95	44.44	27.59

Name of the Blocks	45-59			60 & above		
	T	M	F	T	M	F
Matigara	25.71	36.59	10.34	18.75	30.00	0.00
Naxalbari	29.49	39.53	17.14	5.26	5.56	5.00
Phansidewa	13.92	13.89	13.95	2.70	4.17	0.00
Kharibari	17.39	17.24	17.65	10.00	9.09	11.11

Source: Field Survey 2019-20

4.3 Educational Attainment

Educational attainment of an individual has been defined as the highest level of education that the individual has achieved (Census 2011). For operational purpose the highest level has been decided based on highest-level certification by a recognized institution an individual have. Here the levels of education have been classified based on census 2011. It has been categorized into six different categories: (i) Below Primary, (ii) Primary, (iii) Middle, (iv) Secondary, (v) Higher Secondary and (vi) Graduation & above.

Below Primary: An individual who was enrolled in primary level school but didn't complete the primary levels. That means the individual doesn't have the primary pass certificate.

Primary: An individual whose highest-level educational certification is of 4th standard.

Middle: An individual whose highest-level educational certification is of 8th standard.

Secondary: An individual whose highest-level educational certification is of 10th standard.

Higher Secondary: An individual whose highest level of educational certification is of 12th standard.

Graduation & above: An individual who has obtained educational certification of at least UG level.

Table 4.7 record primary data of educational attainment status of tribal population in the study area. It is classified into three parts; educational attainment status of tribal population in rural areas, urban areas and in overall Sub-division. Analyzing the table 4.7 the first thing that anyone can notice is very low percentage of population has educational attainment certification beyond 8th standard i.e middle level education. Only 18 percent tribal population holds educational attainment certificate beyond middle level in the study area. With increasing literacy consciousness in recent times this data gives a hint towards the high percentage of dropout of 15 and above age group population within class 8 or 9. In rural areas only 14.35 percent tribal population has educational attainment certificate beyond class 8. In urban this percentage is comparatively better. Almost 45 percent population has beyond class 8 certification in urban areas. Between male and female the highest educational attainment status don't vary too much. The status of both male and female are almost same. In the study area 20.81 percent male and 15.66 percent female have hold highest educational attainment certificate above middle level. For obvious reasons in urban this percentages are high than in rural. In rural areas this percentage is very alarming for both male and female. Only 16.26 percent male and 12.04 percent female hold highest educational attainment certification above class 8 in rural areas. This indicates

towards a huge dropout percentage in rural areas for male and female both. Table 4.8 shows Gram Panchayat-wise educational attainment status of tribal population. This shows in Phansidewa C.D. Block only 8.43 percent of tribal population have highest educational attainment certificate above middle level. Not only that, in this block for female this percentage is only 6.94 percent (Table 4.10). This data demands special attention of the government on this block.

Table 4.7 Educational Level in Rural and Urban Areas

Educational status	Rural			Urban			Total		
	Total	Male	Female	Total	Male	Female	Total	Male	Female
Below Primary	23.26	21.95	24.85	5.29	6.25	4.05	20.90	19.83	22.20
Primary	36.19	38.21	33.73	22.94	18.75	28.38	34.44	35.58	33.05
Middle	26.20	23.58	29.39	25.88	25.00	27.03	26.16	23.77	29.09
Secondary	8.20	9.59	6.51	18.82	21.88	14.86	9.60	11.25	7.57
HS	4.10	4.39	3.75	18.82	18.75	18.92	6.04	6.33	5.68
Graduation & above	2.05	2.28	1.78	8.24	9.38	6.76	2.86	3.23	2.41

Source: Field Survey 2019-20

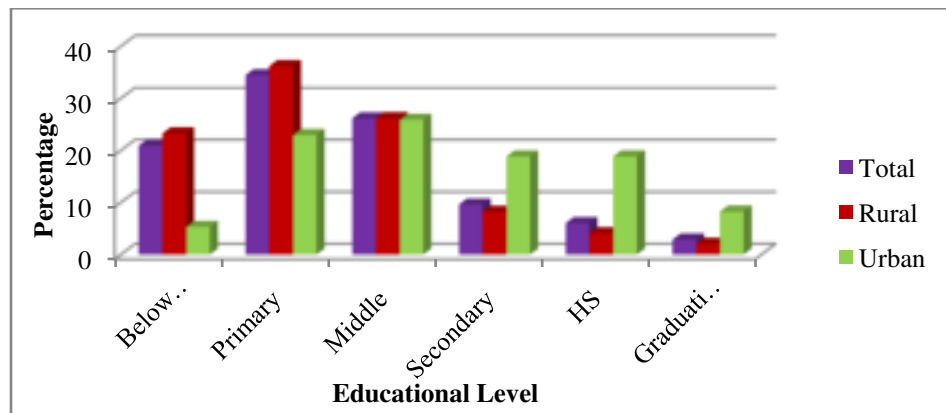


Fig. 4.7: Educational Status of Scheduled Tribe Population

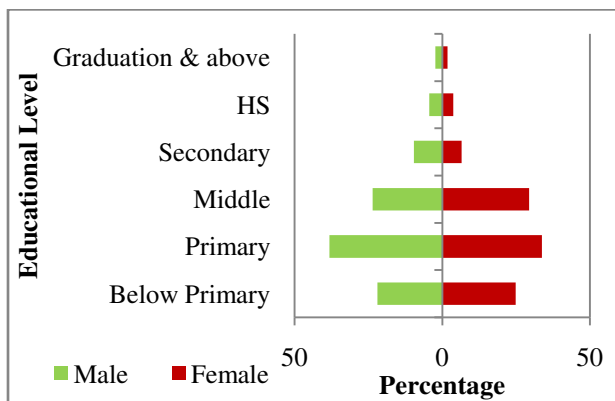


Fig. 4.8: Educational Status of Rural Scheduled Tribe Population

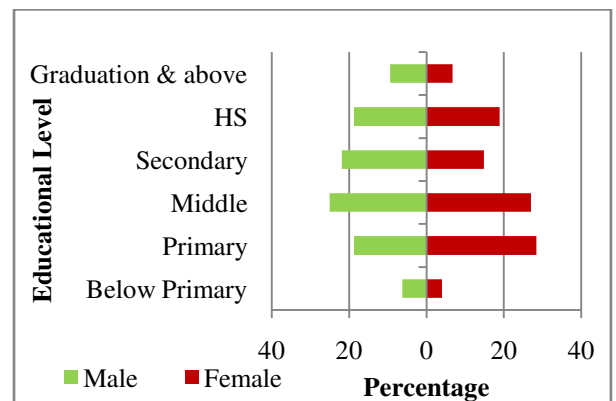


Fig. 4.9: Educational Status of Urban Scheduled Tribe Population

Table 4.8 Gram Panchayat-wise Educational Attainment of Scheduled Tribe Population

Name of the Block/GP	Educational Status of Total Population					
	Below Primary	Primary	Middle	Secondary	HS	Graduation & above
Matigara	16.29	32.58	30.68	11.36	5.68	3.41
Champasari	14.50	37.40	31.30	10.69	3.82	2.29
Matigara I	11.54	23.08	38.46	19.23	7.69	0.00
Matigara II	27.27	45.45	18.18	9.09	0.00	0.00
Atharokhai	12.50	25.00	31.25	12.50	12.50	6.25
Patharghata	20.00	27.50	28.75	10.00	7.50	6.25
Naxalbari						
Naxalbari	19.52	31.85	31.51	8.90	5.82	2.40
Upper Bagdogra	19.23	17.31	38.46	11.54	9.62	3.85
Hatighisa	20.69	35.63	31.03	8.05	3.45	1.15
Gossaipur	28.00	36.00	20.00	10.00	4.00	2.00
Lower Bagdogra	14.29	35.71	32.14	3.57	10.71	3.57
Maniram	20.00	30.00	35.00	10.00	0.00	5.00
	12.73	34.55	34.55	9.09	7.27	1.82
Phansidewa						
Phansidewa	29.94	40.70	20.93	5.23	2.33	0.87
Hetmuri	29.63	46.30	18.52	4.63	0.00	0.93
Bidhan Nagar I	27.12	49.15	16.95	6.78	0.00	0.00
Bidhan Nagar II	35.82	35.82	23.88	4.48	0.00	0.00
Chathat Bansgao	14.29	32.14	21.43	14.29	14.29	3.57
Ghoshpukur	35.71	32.14	23.21	3.57	5.36	0.00
Jalash Nijamtara	30.00	40.00	30.00	0.00	0.00	0.00
Phansidewa	25.00	37.50	25.00	0.00	6.25	6.25
Kharibari						
Kharibari	26.13	39.19	22.07	8.11	2.70	1.80
Binnabari	21.74	34.78	21.74	15.22	6.52	0.00
Buraganj	18.84	34.78	27.54	11.59	2.90	4.35
Kharibari Panisali	35.00	32.50	20.00	7.50	2.50	2.50
Raniganj Panisali	31.34	50.75	17.91	0.00	0.00	0.00

Source: Field Survey 2019-20

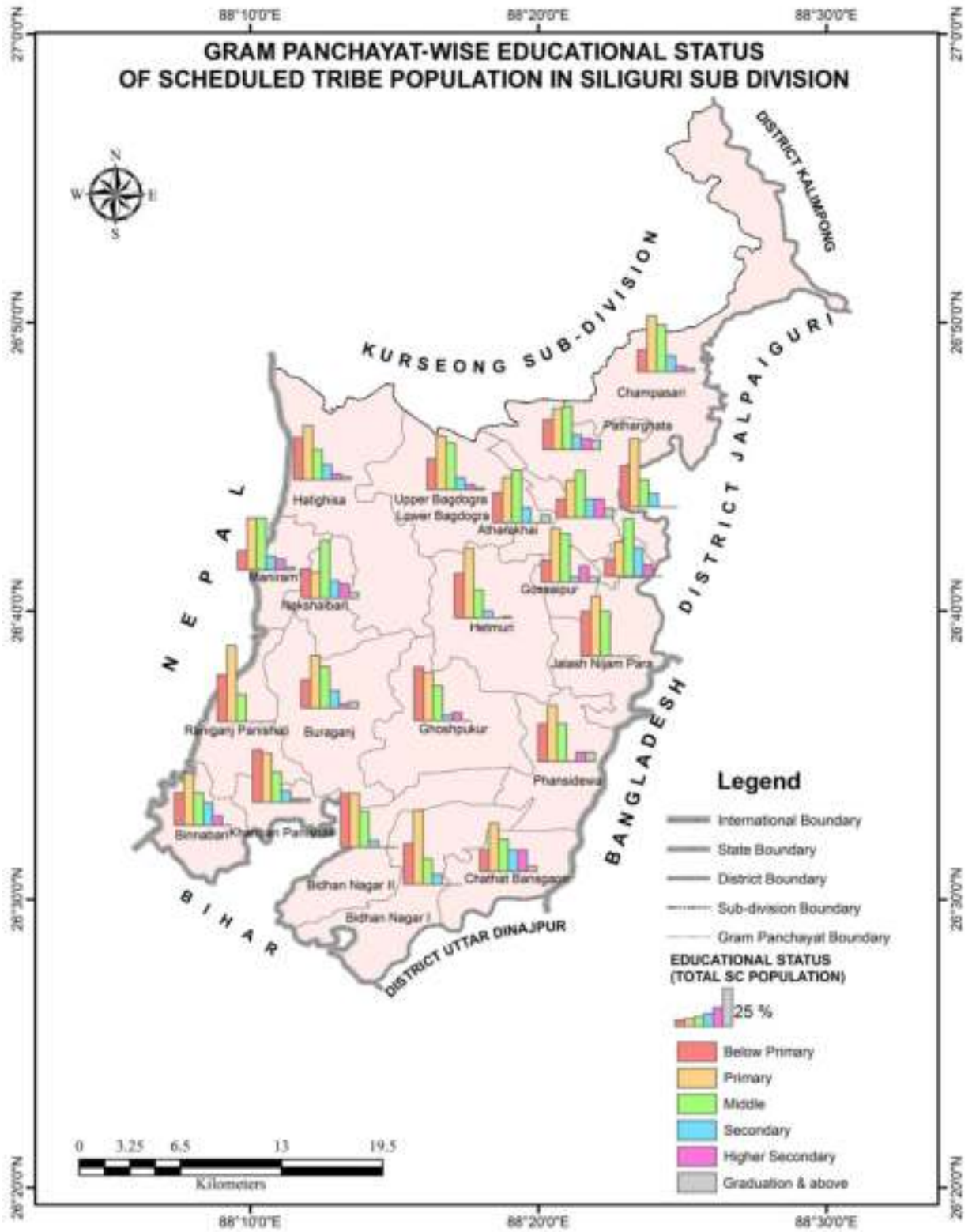


Fig 4.10

Table 4.9 Gram Panchayat-wise Educational Attainment of Scheduled Tribe Male

Name of the Block/GP	Educational Status of Male Population					
	Below Primary	Primary	Middle	Secondary	HS	Graduation & above
Matigara	17.76	32.24	26.32	15.79	4.61	3.29
Champasari	15.49	36.62	28.17	15.49	2.82	1.41
Matigara I	6.25	25.00	37.50	25.00	6.25	0.00
Matigara II	33.33	33.33	16.67	16.67	0.00	0.00
Atharokhai	9.09	18.18	27.27	18.18	18.18	9.09
Patharghata	25.00	31.25	20.83	12.50	4.17	6.25
Naxalbari						
Naxalbari	17.09	35.44	29.75	8.86	6.33	2.53
Upper Bagdogra	21.43	14.29	39.29	10.71	10.71	3.57
Hatighisa	14.29	45.24	26.19	9.52	4.76	0.00
Gossaipur	29.63	37.04	18.52	7.41	3.70	3.70
Lower Bagdogra	12.50	50.00	31.25	0.00	6.25	0.00
Maniram	16.67	25.00	41.67	8.33	0.00	8.33
Phansidewa						
Phansidewa	9.09	36.36	30.30	12.12	9.09	3.03
Hetmuri						
Hetmuri	30.65	43.55	16.13	5.91	2.69	1.08
Bidhan Nagar I	26.32	54.39	14.04	5.26	0.00	0.00
Bidhan Nagar II	25.00	56.25	12.50	6.25	0.00	0.00
Chathat Bansgao	36.11	41.67	16.67	5.56	0.00	0.00
Ghoshpukur	6.25	18.75	31.25	18.75	18.75	6.25
Jalash Nijamtara	53.33	23.33	13.33	3.33	6.67	0.00
Phasidewa	16.67	50.00	33.33	0.00	0.00	0.00
Kharibari						
Kharibari	33.33	44.44	11.11	0.00	0.00	11.11
Binnabari	20.17	41.18	23.53	8.40	4.20	2.52
Buraganj	16.67	37.50	25.00	12.50	8.33	0.00
Kharibari Panisali	18.92	27.03	29.73	13.51	5.41	5.41
Raniganj Panisali	15.79	31.58	31.58	10.53	5.26	5.26
Raniganj Panisali	25.64	61.54	12.82	0.00	0.00	0.00

Source: Field Survey 2019-20

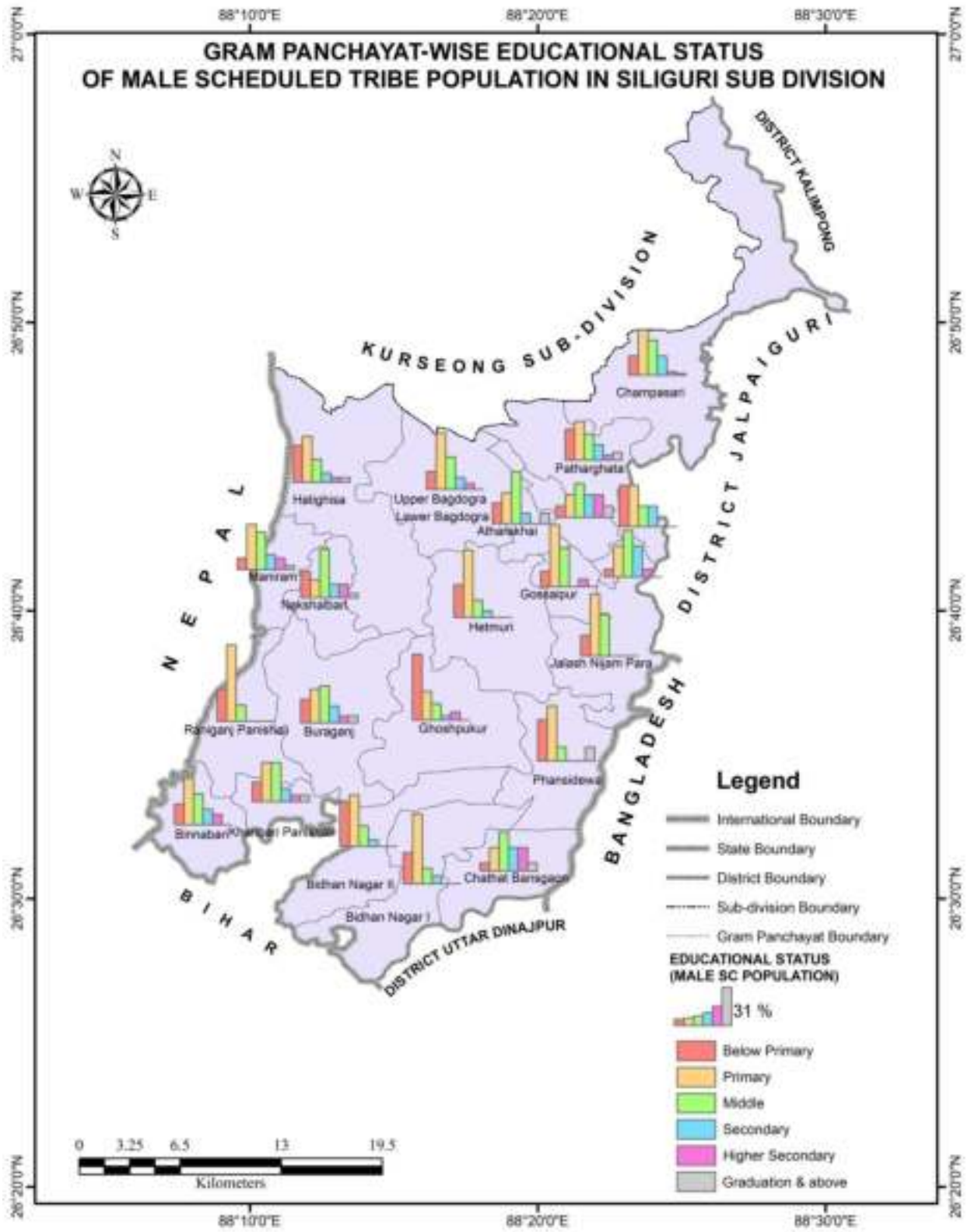


Fig 4.11

Table 4.10 Gram Panchayat-wise Educational Attainment of Scheduled Tribe Female

Name of the Block/GP	Educational Status of Female Population					
	Below Primary	Primary	Middle	Secondary	HS	Graduation & above
Matigara	14.29	33.04	36.61	5.36	7.14	3.57
Champasari	13.33	38.33	35.00	5.00	5.00	3.33
Matigara I	20.00	20.00	40.00	10.00	10.00	0.00
Matigara II	20.00	60.00	20.00	0.00	0.00	0.00
Atharokhai	20.00	40.00	40.00	0.00	0.00	0.00
Patharghata	12.50	21.88	40.63	6.25	12.50	6.25
Naxalbari						
Naxalbari	22.39	27.61	33.58	8.96	5.22	2.24
Upper Bagdogra	16.67	20.83	37.50	12.50	8.33	4.17
Hatighisa	26.67	26.67	35.56	6.67	2.22	2.22
Gossaipur	26.09	34.78	21.74	13.04	4.35	0.00
Lower Bagdogra	16.67	16.67	33.33	12.33	16.67	4.33
Maniram	25.00	37.50	25.00	12.50	0.00	0.00
Phansidewa						
Phansidewa	18.18	31.82	40.91	4.55	4.55	0.00
Hetmuri						
Hetmuri	29.11	37.34	26.58	4.43	1.90	0.63
Bidhan Nagar I	33.33	37.25	23.53	3.92	0.00	1.96
Bidhan Nagar II	29.63	40.74	22.22	7.41	0.00	0.00
Chathat Bangsao	35.48	29.03	32.26	3.23	0.00	0.00
Ghoshpukur	25.00	50.00	8.33	8.33	8.33	0.00
Jalash Nijamtara	15.38	42.31	34.62	3.85	3.85	0.00
Phasidewa	50.00	25.00	25.00	0.00	0.00	0.00
Kharibari						
Kharibari	14.29	28.57	42.86	0.00	14.29	0.00
Binnabari	33.01	36.89	20.39	7.77	0.97	0.97
Buraganj	27.27	31.82	18.18	18.18	4.55	0.00
Kharibari Panisali	18.75	43.75	25.00	9.38	0.00	3.13
Raniganj Panisali	52.38	33.33	9.52	4.76	0.00	0.00
Raniganj Panisali	39.29	35.71	25.00	0.00	0.00	0.00

Source: Field Survey 2019-20

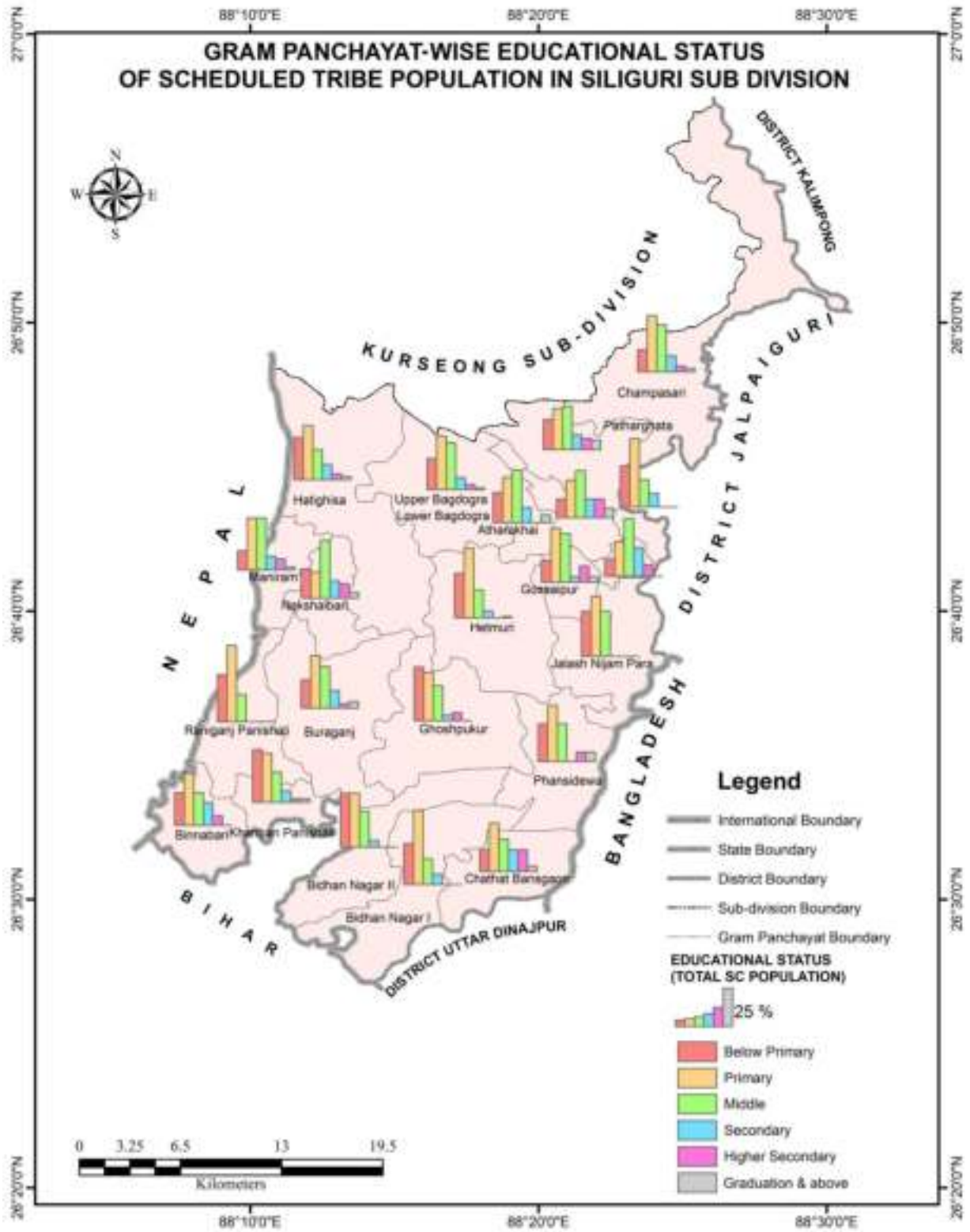


Fig 4.12

4.4 Current Educational Status of Children (7-14 Years)

The constitution of India through 86th amendment in 2002 (Article 21-A) adopted the idea of free and compulsory education for age group of 6-14 years of age. This was enacted in the year 2009 as Right of Children to Free and Compulsory Education Act, 2009. This act gives the right to every child to complete his/her education up to elementary level that is up to class 8 for free in the neighborhood school. This act gives a huge boost to Indian elementary education system. This has encouraged guardians to enroll their children in school and let them continue their study, at least up to elementary level. This act also helps to reduce child exploitation mainly child labour. The scheduled tribes being the most under privileged community in India faced huge challenges in terms of literacy. This act with the continuous drive from the government has brought a huge change in tribal literacy in recent times.

Table 4.11 reflects the recent scenario of tribal child education (7-14 years of age) status. 45.32 percent of the total tribal children in the sub division have been pursuing their primary level education and 34.17 percent their middle level. Only 8.63 percent has never attended any school. The table 4.11 also shows that the *never attended school* instances are more frequent for girls than boys. 10.77 percent girls of this age group have never attended any school and for boys the percentage is 6.76 percent. That means one out of every ten girls of this age group is still de-touch from the education system. This needs special attention of the concerned authorities. In urban areas all the tribal population of this age group is going to school. The dropout as well as the *never attended school* category percentage is nil in urban areas. This is a very good thing for this community.

The overall dropout percentage in this age group is 10.79 percent in the Sub-division, which needs to be improved. Interestingly, in this age group the female dropout percentage (7.69 percent) is lower than the male (13.51 percent). The dropout percentage in rural for male (14.18 percent) is almost double than that of the female (7.94 percent) percentage.

Table 4.11 Current Educational Status of Children (7-14 Years)

Educational Level	Rural			Urban			Total		
	T	M	F	T	M	F	T	M	F
Below Primary	46.07	46.81	45.24	27.27	28.57	25.00	45.32	45.95	44.62
Primary to middle	32.58	30.50	34.92	72.73	71.43	75.00	34.17	32.43	36.15
Middle to secondary	1.12	1.42	0.79	0.00	0.00	0.00	1.08	1.35	0.77
Never attend	8.99	7.09	11.11	0.00	0.00	0.00	8.63	6.76	10.77
Drop out	11.24	14.18	7.94	0.00	0.00	0.00	10.79	13.51	7.69

Source: Field Survey 2019-20

4.5 Educational Schemes

The Tribal Development Department runs a good number of educational schemes to provide support to ST students to continue their study. Both central and state governments give financial assistance to tribal students through their individual bank accounts to encourage their studies. In this sub section various educational schemes and its benefits has been discussed.

4.5.1 Pre-Matric Scholarship:

The main objective of this scheme is to provide financial assistance to encourage tribal students to continue their studies after elementary level to secondary level. The beneficiaries of this scheme are running students of class IX and X whose parents/guardians income doesn't exceed Rs. 2.00 lakh p.a.

Hosteller	Day Scholar
Rs. 750/- p.m. for 10 months.	Rs. 150/- p.m. for 10 months.
Adhoc Grant of Rs 1000/- p.a.	Adhoc Grant Rs. 750/- p.a.

4.5.2 Post-Matric Scholarship:

This scholarship has been given to tribal students whose family income does not exceed Rs. 2.50 lakh to complete their study after matriculation level. As per their post matriculation course tuition fees and non-refundable fees has been paid by the government and along with that fixed maintenance allowance has been given through their bank accounts.

Group	Course of Study	Maintenance allowance (Rs.p.m)	
		Hostellers	Day Scholar
I	Medical/Engineering/B.Sc(Agri)/M.Phil/P.hd /L.L.M etc.	1200	550
II	B.Pharm/ B.Nursing /L.L.B/Hotel Management/Post Graduate Courses etc.	820	530
III	General courses up to graduate Level.	750	300
IV	Classes XI and XII in 10+2 system Intermediate courses/ITI/Polytechnic Courses	"center">750	230

4.5.3 Up-Gradation of Merit Scholarship:

This scholarship has been given to a fixed number of top 72 students applied per year to mitigate deficiencies in school subjects and in preparation of entrance exams in professional courses like Engineering, Medicine etc.

Grants	Amount
1. Boarding & lodging charge for 10 months	7,000/-
2. Pocket money for 10 months	2,000/-
3. Books & Stationery	2,500/-
4. Honorarium to Principal, expert & other incidental charges	8,000/-
Total :	19,500/-

4.5.4 Ashram Hostel:

Ashram hostels have been set up for tribal boys and girls within the campus of govt. recognized schools. Students of class I-X usually get a chance to enroll them in these hostels subject to availability of seats. Income ceiling of parents/guardians for admission is Rs. 36000/- per annum. Currently 217 such hostels are running with seat capacity of 6234 tribal students. For maintenance the students are given 750/- per month for the whole academic year. In addition to that they are given free lodging in these hostels.

4.5.5 Hostel Grant:

The West Bengal government takes initiative to build hostels in or adjacent to junior and secondary high school campus. The tribal students of class V to X who avails this facility will be given hostel grants for 10 months in a academic year. The hostel grant is 750/- per month. This is credited to the student's individual bank account. Currently in the state total 1522 Jr. and Secondary schools are providing this facility under this initiative.

4.5.6 Sikshashree:

It is also a sole initiative of state government to cut down the dropout percentage within middle level school education. Merging book grant, maintenance grant and other compulsory charges grant, this scheme has been started for class V-VIII. Financial assistance of Rs. 800/- per annum is given. Family income of the beneficiary must not exceed Rs. 250000/- per year. To make this scheme more transparent, the assistance is given through individual bank account only.

4.5.7 Merit Scholarship Scheme:

It is a sole initiative of the state government. As per merit ST students are given scholarships. The monthly scholarship amount varies class-wise. This scheme has been divided into two parts. 1st is scholarship for only ST girl students studying in class V to X. And in 2nd part i.e. for class IX to XII the scholarship has been given to all the students.

Parents/guardian's Income ceiling	V to X	Quota	IX to XII	Parents/guardian's Income ceiling	Quota
	V to VI – Rs.100/- p.m.		Rs.400/- p.m.		
Rs. 60,920/- p.a.	VII to VIII, Rs.125/- p.m.	1038	Rs.400/- p.m.	Rs. 36,000/- p.a.	410
	IX to X – Rs.150/- p.m.				

4.5.8 National Fellowship and Scholarship for Higher Education

This is a Govt. of India initiative to give financial assistance to ST students to pursue their higher studies. There are two parts of this scheme. 1st part is national scholarship for tribal students to pursue their graduate and post graduate degree from 246 premier institutions of India like IITs, AIIMS, IIMs, NIITs etc. This scholarship is given to 1000 top tribal meritorious students whose family income doesn't exceed Rs 6.00 lakh per year. Scholarship amount will include tuition fees, living expenses and allowances for books and computers. The 2nd part of the scheme is fellowship grant to tribal students to pursue their M.phil and Ph.D from recognized Universities/Institutions/Colleges. For M.phil Rs 25000/- and for Ph.D Rs 28000/- fellowship grant is given. In addition to that contingency, HRA and reading allowance is given with the fellowship grant. 750 tribal students get this scholarship every year and girls and Particularly Vulnerable Tribal Groups (PVTGs) are given priority in this scheme.

4.5.9 National Overseas Scholarship

Govt. of India gives financial assistance to 20 schedule tribe students every year to pursue their post graduate, Ph.D and post doctoral degree from a foreign university/institution/college. Out of these 20 seats 3 seats are reserved for PVTGs. Selection is based on interview based merit list. The scholarship includes tuition fees, annual maintenance allowance of USD 15400, Contingence of USD 1532, poll tax, visa fee, Medical Insurance, cost of air journey and incidental charges. Family income limit has been set to avail this scholarship is at Rs 6.00 lakh per annum.

4.5.10 Kanyashree

Kanyashree is an initiative taken by the Government of West Bengal to improve the status of the girls by assisting financially to the economically backward families with family income not more than Rs. 120000/- per annum so that the economically marginalized families don't arrange the marriage of their girl child before they turn up 18 years. The financial assistance is given in two parts; K1 & K2. In K1 girls of class viii or above with age group between 13 to 18 years are

given annual scholarship of Rs. 750/-. And in K2 an one time grant of Rs. 25000/- is paid to the girl child when she turn 18 years provided that at the time of application they are engaged in an academic part. No married girl is eligible for this scholarship.

4.6 Awareness about Different Schemes

Only launching different schemes will not help the educational development of the tribal people if implementation is not assured. So, need of reality check in terms of implementation and awareness of the schemes that are meant for the betterment of tribal students, is what has been discussed here. In this particular section awareness about the mentioned schemes among the tribal households in the study area has been highlighted. To do so the section has been divided into two parts. In the first part percentage result of benefited households from different educational schemes has been analyzed and in the second part percentage of aware households irrespective of beneficial, has been established. These two percentages in total gives the lucid picture about the overall awareness among the tribal households in the study area.

Table no 4.12 shows the percentage of benefited households from different educational schemes designed for the financial assistance of the tribal students by the government. This shows only 12.45 percent and 8.30 percent households in the study area are benefited by the “Pre-Matric & post Scholarship for ST” scheme respectively. And only 6.23 percent of tribal households in the study area are benefited from the “Sikshashree”. During survey it has been observed that awareness about the schemes like “Sikshashree”, “Pre-Matric”, “Post-Matric” has been developed among the tribals during the last 4-5 years. It is to be noted that though the scheme like “Sikshashree” involves students of class V to VIII and schemes likes “Pre-Matric”& “Post-Matric” involve comparatively higher class students of class IX to X and Class XI to XII respectively, the percentage of benefited households from “Sikshashree” are less than the other two. The main reason behind this out of the conventional trend is lack of awareness of the tribal guardians. During lower ages the students are fully depended upon the guardians to get the DBT (Direct Benefit Transfer) in their accounts. But as the age increases they become self sufficient to complete the procedures. So, lack of awareness of guardians plays a major role here for the schemes designed for lower classes. As the higher studies are very rare among the tribal students in the study area, the beneficial households are also very rare.

Table 4.12 Percentage of Benefited ST Households from Different Educational Schemes

Schemes	Percentage of Benefited Households
Sikshashree	6.23
Pre-Matric Scholarship for ST	12.45
Post Matric Scholarship for ST	8.30
National Fellowship and Scholarship for Higher Education	0.00
National Overseas Scholarship	0.00
Merit Scholarship Scheme:	0.57
Up-Gradation of Merit Scholarship	0.00

Source: Filed Survey 2019-20

Table no 4.13 shows the awareness percentage among the tribal households about the different educational schemes irrespective of beneficial status. Out of the total 530 households that have been surveyed, it has been observed that only about “Mid-day Meal” and flagship schemes of West Bengal government named “Sabuj Sathi” & “Kanyashree”, a good percentage of household respondents are aware. About “Mid-day Meal” 94.15 percent household respondents and about “Sabuj Sathi” 82.26 percent respondents are aware. And the percentage for “Kanyashree” is 72.45 percent. Dedicated scholarship schemes even like “Sikshashree”(39.81 percent), “Pre-Matric”(37.92 percent), “Post-Matric”(29.06 percent), “Merit Scholarship”(16.42 percent); those are designed to assist the tribal students for their education up to higher secondary levels, are very less aware among the respondents. The scholarship schemes that are dedicated for higher studies of tribal students are barely known to the respondents. During survey it has been observed that a huge percentage of respondents even heard the scholarship schemes like “National Overseas Scholarship”, “Up-Gradation of Merit Scholarship” for the first time. During the whole survey it has been come out very clearly that the schemes (Kanyashree, Mid-day Meal, Sabuj-sathi etc.) of which procedures are initiated and completed by the school authorities it selves, are more successful than the schemes (Pre-Matric & Post Matric Scholarship, Sikshashree, Merit Scholarship Scheme etc.), those need self initiations and to be self done.

Table 4.13 Percentage of Aware Households about Different Educational Schemes

Educational Schemes	Awareness	
	Yes	No
Sikshashree	39.81	60.19
Kanyashree	72.45	27.55
Mid Day Meal	94.15	5.85
Sabuj Sathi	82.26	17.74
Pre-Matric Scholarship for ST	37.92	62.08

Educational Schemes	Awareness	
	Yes	No
Post Matric Scholarship for ST	29.06	70.94
National Fellowship and Scholarship for Higher Education	1.13	98.87
National Overseas Scholarship	0.38	99.62
Merit Scholarship Scheme	16.42	83.58
Hostel Grant	9.81	90.19
Up-Gradation of Merit Scholarship	0.75	99.25

Source: Filed Survey 2019-20

4.7 Educational Awareness

From the above study one thing comes up very clear that although it has been made possible to built literacy awareness among tribal population in the sub division, still now higher level of education is very rare among them. Most of students are not pursuing their HS degree or above. Lack of awareness among tribal parents/guardians may be the main reason behind this. To check the educational awareness a sample survey has been conducted among 530 parents/guardians in the study area. They have been asked questions of four categories. Necessities of Education, Preferences on Educational Levels, Aspects of Education and Awareness about Different Schemes Beneficial for Tribal Education are the four categories. In first category one simple question has been asked to the respondents. Whether education is necessary or not for both male and female. 97.74 percent of the respondents agree to the fact that education is necessary for both. In second category they are asked about their preferences on educational levels up to which they wanted their children to continue their study. For male 32.08 percent and for female 37.36 percent of the total respondents think higher secondary degree of their children would be sufficient. 28.87 percent respondents wish their male child to complete the graduation degree. For female child the percentage is 21.7 percent. And almost 35 percent of the respondents want their children to study as far as the child want. From these two questions it is very much clear that in present day tribal people don't discriminate between male and female education. Initially they think about equal education for both male and female. The third category is all about aspects of education. In this category the respondents have faced four questions. 1st question that they have faced is "is higher level education necessary, only literate is not enough" 71.51 percent of the respondents gave their positive nod to this question and 23.58 percent believe that only literacy is enough. 2nd question they have been asked is "is higher education needed only to get a job?" 70.75 percent of the respondents have said that higher level education is needed only to get a job. 13.58 percent have said no and 15.66 percent are undecided. 3rd question was "is good education provides good employment?" 71.32 percent said yes and only 3.4 percent said no. The

last question was “is language a barrier in school?” In reply almost 1 out of 2 respondents said in early ages this became a huge problem for the children. That’s why most of them lost interest in studies at early ages. With time although they learnt the language but the lost interest didn’t come back. Almost one fifth respondents were clue less about this. .

Table 4.14 Educational Awareness of Respondents

Necessity of Education	Yes	No	No Response
Is education necessary	97.74	0	2.26
For Male	98.49	0	1.51
For Female	98.11	0	1.89
Preferences on Educational Level	For Male	For Female	
Primary	0.57	0.57	
Secondary	2.83	3.21	
Higher Secondary	32.08	37.36	
Graduation	28.87	21.7	
As much as they want	34.15	35.09	
No Response	1.89	2.08	
Aspects of Education	Agree	Disagree	Undecided
Is higher level education necessary, only literate is not enough	71.51	23.58	4.91
Higher level education needed only for job	70.75	13.58	15.66
Higher level education provides better standard of living	71.32	3.4	22.08
Language is a barrier in school	54.53	26.42	19.06

Source: Field Survey 2019-20

4.8 Conclusion

The objective of this chapter was to analyze the educational status of tribal population in the study area. To do so a critical analysis on tribal literacy rate, disparity index, educational attainment status, current child educational status (7-14) and educational awareness among tribal parents/guardians has been done. Through this analysis some very important points have come up. Some of them are very encouraging and some need more attention. One of the most positive and encouraging data which has come up is with time tribal literacy rate is growing with quiet a pace. The age-wise literacy rate data reflects a clear picture of this status. Another encouraging thing is increasing female literacy rate with time. Age group-wise female literacy rate data gives a clear indication of huge improvement in female literacy rate. The gender gap in literacy rate among early age (7-14 years old) tribal population shows very minimal differences. That shows

improved literacy awareness among the tribal in the study area. Although Phansidewa C. D. Block is still lagging behind from other blocks under this sub division.

The major concern regarding tribal educational status is discontinuation of study mainly after middle level education. Higher study among tribal population is a very rare case in the study area. Even in urban areas only a few people have pursued their graduation degree. During the survey it has been observed that the male students of age group 15-21 are less interested in their studies rather they interested in income generation. The study also reveals that the awareness about the ongoing different educational schemes and scholarships is very less. Even a large no of tribal guardians/parents is ignorant about the flagship schemes of West Bengal government like Kanyashree, Sikshashree. A very high percentage of the tribal parents/guardians are ignorant about the financial assistances those are available for their children to continue their education at higher levels.

As higher level of education is a key factor of a community to address and overcome its social and economic problems and becoming a better and developed community, it is very important for the tribal community of the Siliguri Sub-division to understand the importance of higher level of education. Only high level literacy rate can't help them as community to be developed but higher level education can help them immensely becoming a better and developed community.

References

- Brahmanandam, T., & Bosu, T. (2016). Educational Status among the Scheduled Tribes:. *The Nehu Journal, XIV* (2), 69-85.
- Cruz, L. E. (2018). The Idea of Educational Development: An Historical Perspective: The Idea of. *To Improve the Academy* .
- Educational attainment of person*. (2011, June). Retrieved September 2021, from Statistics Canada: <https://www23.statcan.gc.ca/imdb/p3Var.pl?Function=DEC&Id=85134>
- Education Schemes* (n.d.). Retrieved september 2021, from Tribal Development Department: <https://www.adibasikalyan.gov.in/html/education.php>
- Millenniumin Development Goal Indicator*. (n.d.). Retrieved september 2021, from millenniumindicators.un.org: <https://millenniumindicators.un.org/unsd/mdg/Metadata.aspx?IndicatorId=0&SeriesId=643>
- National Education Policy (2020)*. Government of India.
- Patra, U. K., Gayak, J., Khan, K. R., SK, K., Halder, S., Sen, A., et al. (2021). A Comparative Study Of Tribal Education Development In. *Journal Of Critical Reviews, 8* (01), 110-121.

Sarva Siksha Abhiyan (SSA). (2017). Retrieved from Department of Administrative Reforms:
[https://darpg.gov.in/sites/default/files/Sarva percent20Siksha percent20Abhiyan.pdf](https://darpg.gov.in/sites/default/files/Sarva%20Siksha%20Abhiyan.pdf)

Scholarship & DBT. (2021). Retrieved september 2021, from Ministry of Tribal Affair:
<https://tribal.nic.in/ScholarshiP.aspx>