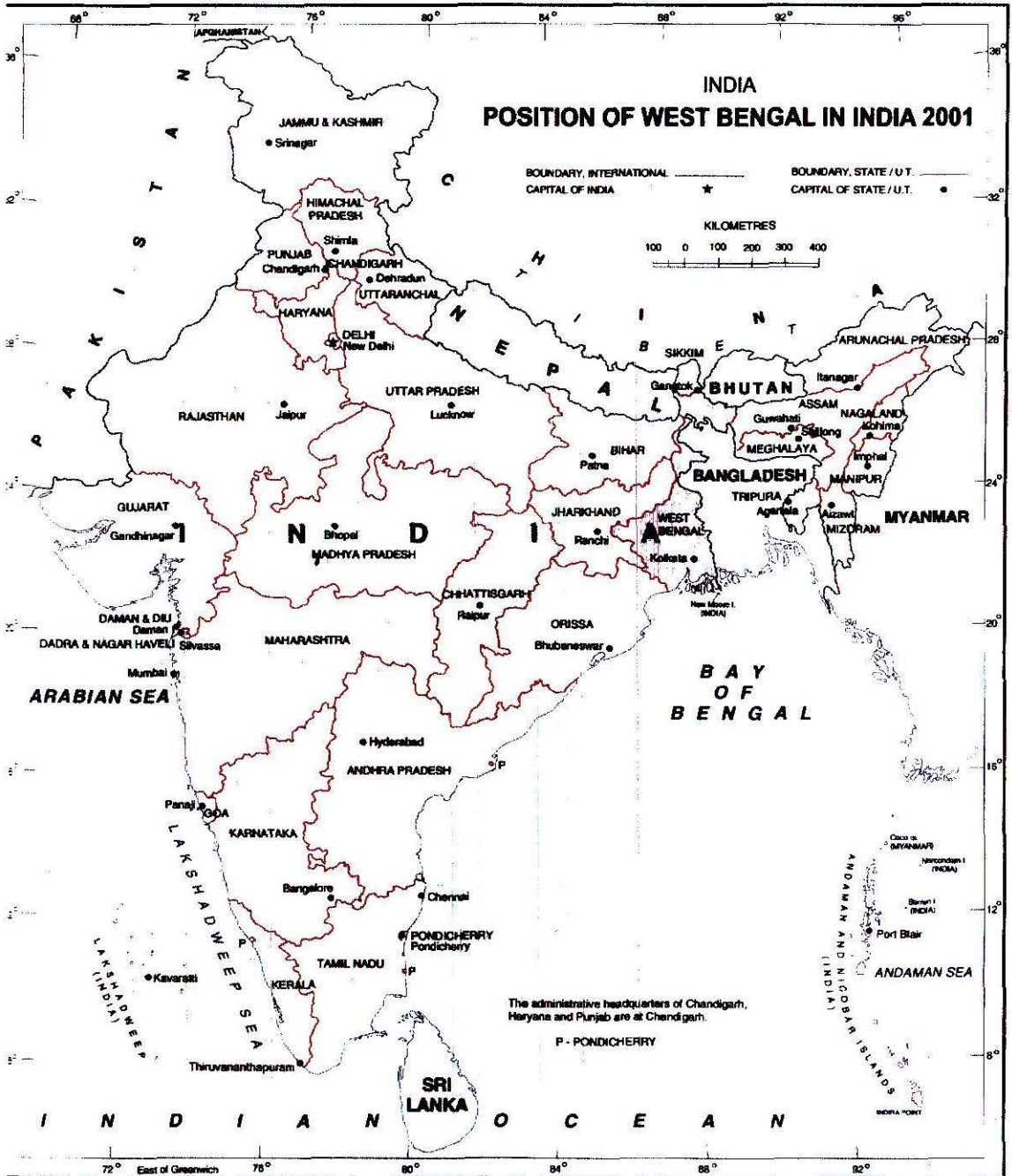
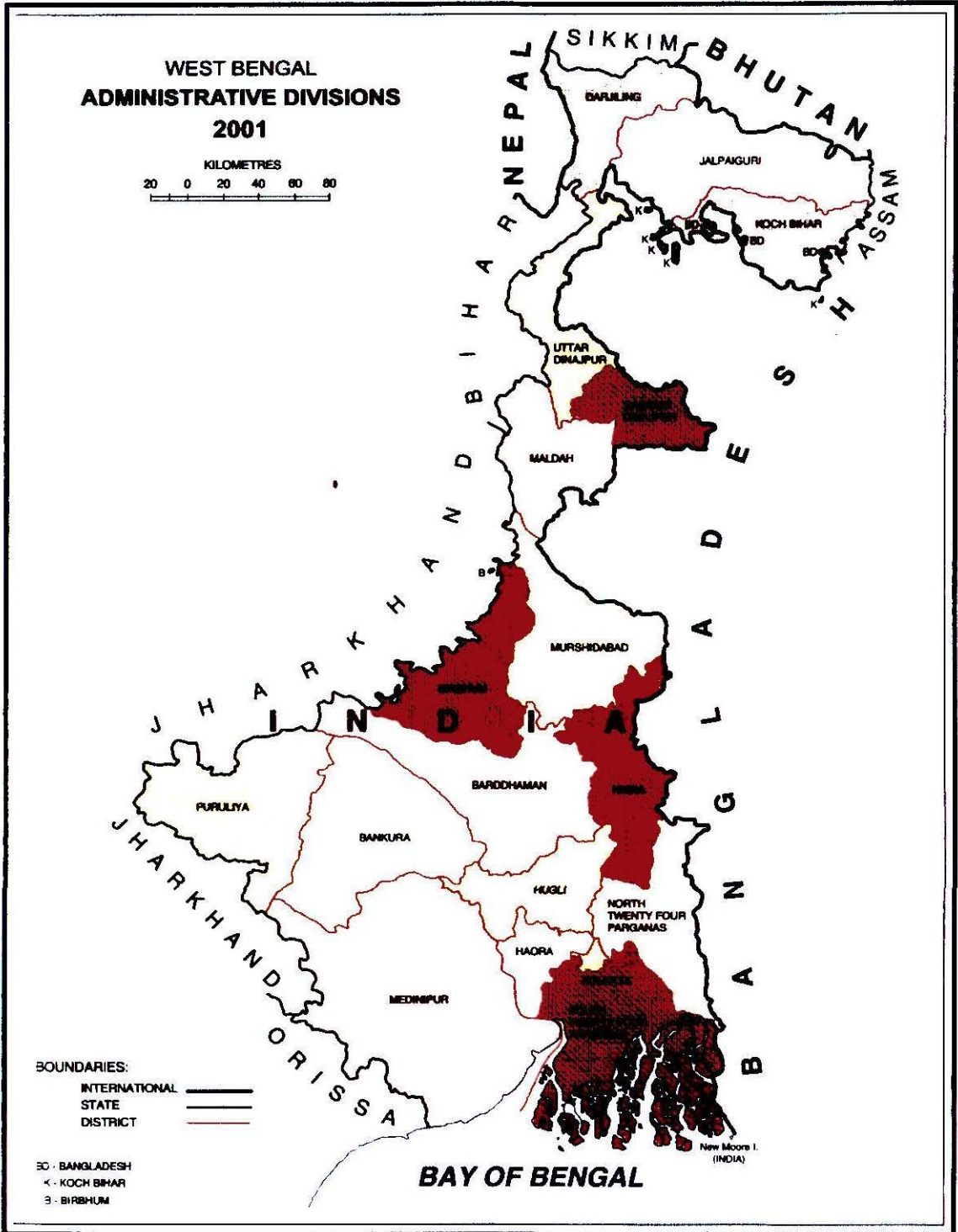


LIST OF MAPS

1. Map of India showing position of West Bengal
2. Map of West Bengal showing position of Uttar Dinajpur district
3. Map of Uttar Dinajpur district showing positions of different Blocks
4. Map of Kaliyaganj Block showing position of village Delwalpur
5. Map of Hemtabad Block showing position of village Malon
6. Map of Itahar Block showing position of village Tilna
7. Map of Karandighi Block showing position of village Nakol
8. Map of Islampur Block showing position of village Jagatagaon
9. Map of Goalpukhar – I showing position of village Dharampur.



MAP : 1

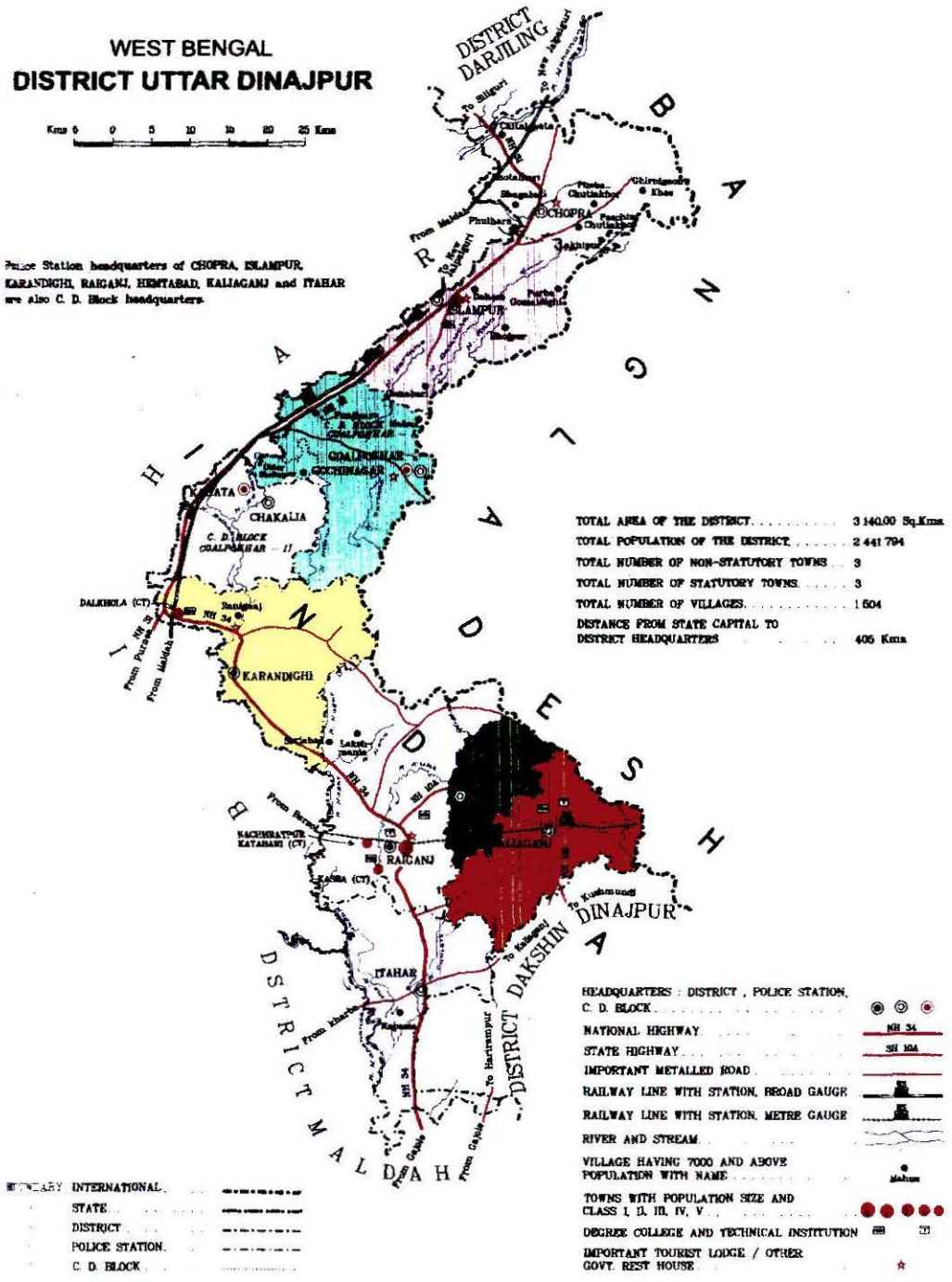


MAP : 2

WEST BENGAL DISTRICT UTTAR DINAJPUR

Kms 0 5 10 15 20 25 Km

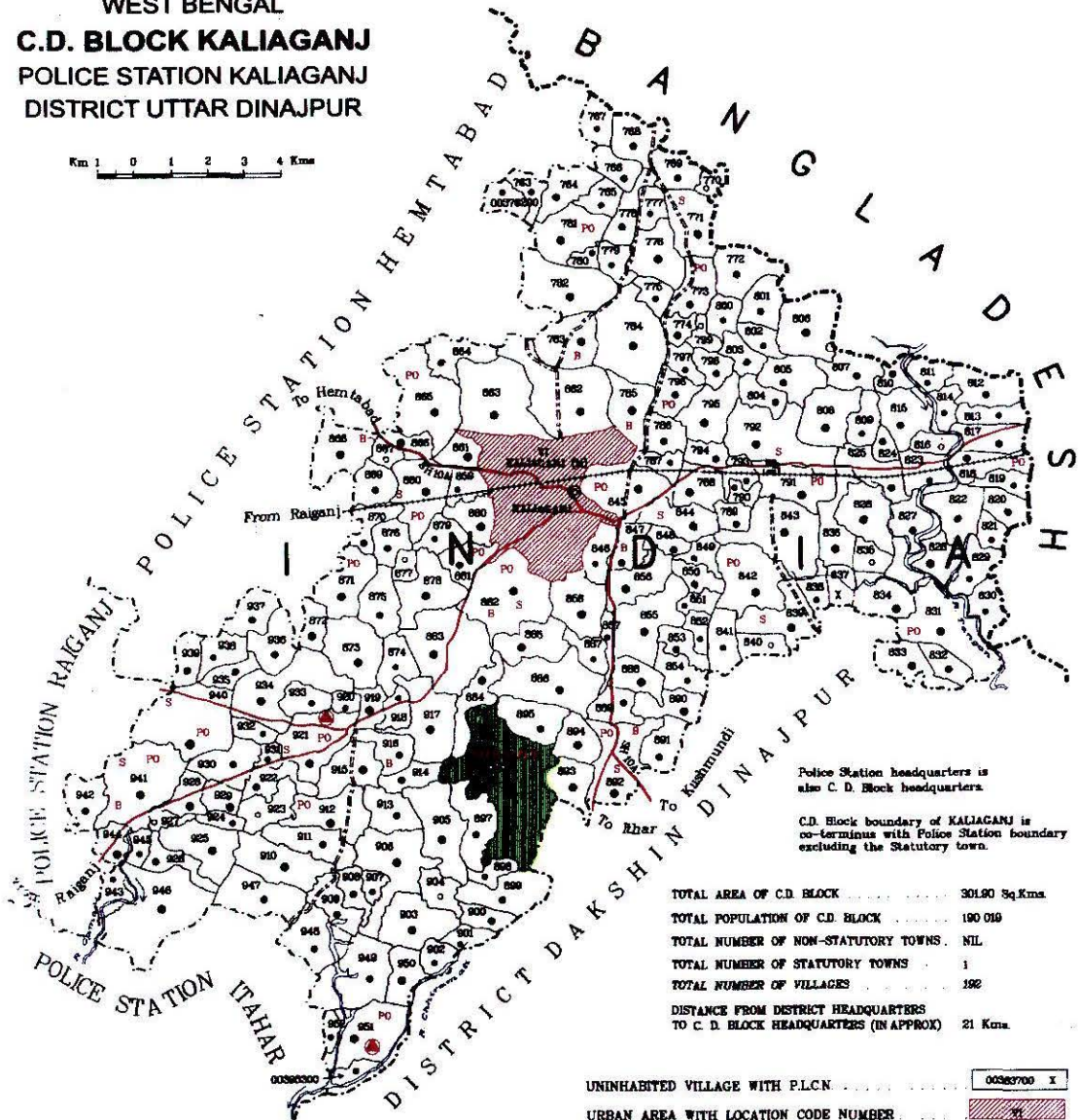
Police Station headquarters of CHOPRA, ISLAMPUR, KARANDGHI, RAGANI, HEMTABAD, KALIAGANI and ITABAR are also C. D. Block headquarters.



MAP : 3

WEST BENGAL
C.D. BLOCK KALIAGANJ
 POLICE STATION KALIAGANJ
 DISTRICT UTTAR DINAJPUR

Km 1 0 1 2 3 4 Kms



Police Station headquarters is also C. D. Block headquarters.
 C.D. Block boundary of KALIAGANJ is co-terminus with Police Station boundary excluding the Statutory town.

TOTAL AREA OF C.D. BLOCK	301.90 Sq.Kms
TOTAL POPULATION OF C.D. BLOCK	190 019
TOTAL NUMBER OF NON-STATUTORY TOWNS	NIL
TOTAL NUMBER OF STATUTORY TOWNS	1
TOTAL NUMBER OF VILLAGES	192
DISTANCE FROM DISTRICT HEADQUARTERS TO C. D. BLOCK HEADQUARTERS (IN APPROX)	21 Kms.

BOUNDARY, INTERNATIONAL
 DISTRICT
 POLICE STATION
 VILLAGE WITH P.L.C.N. 00576200

HEADQUARTERS : POLICE STATION & C. D. BLOCK

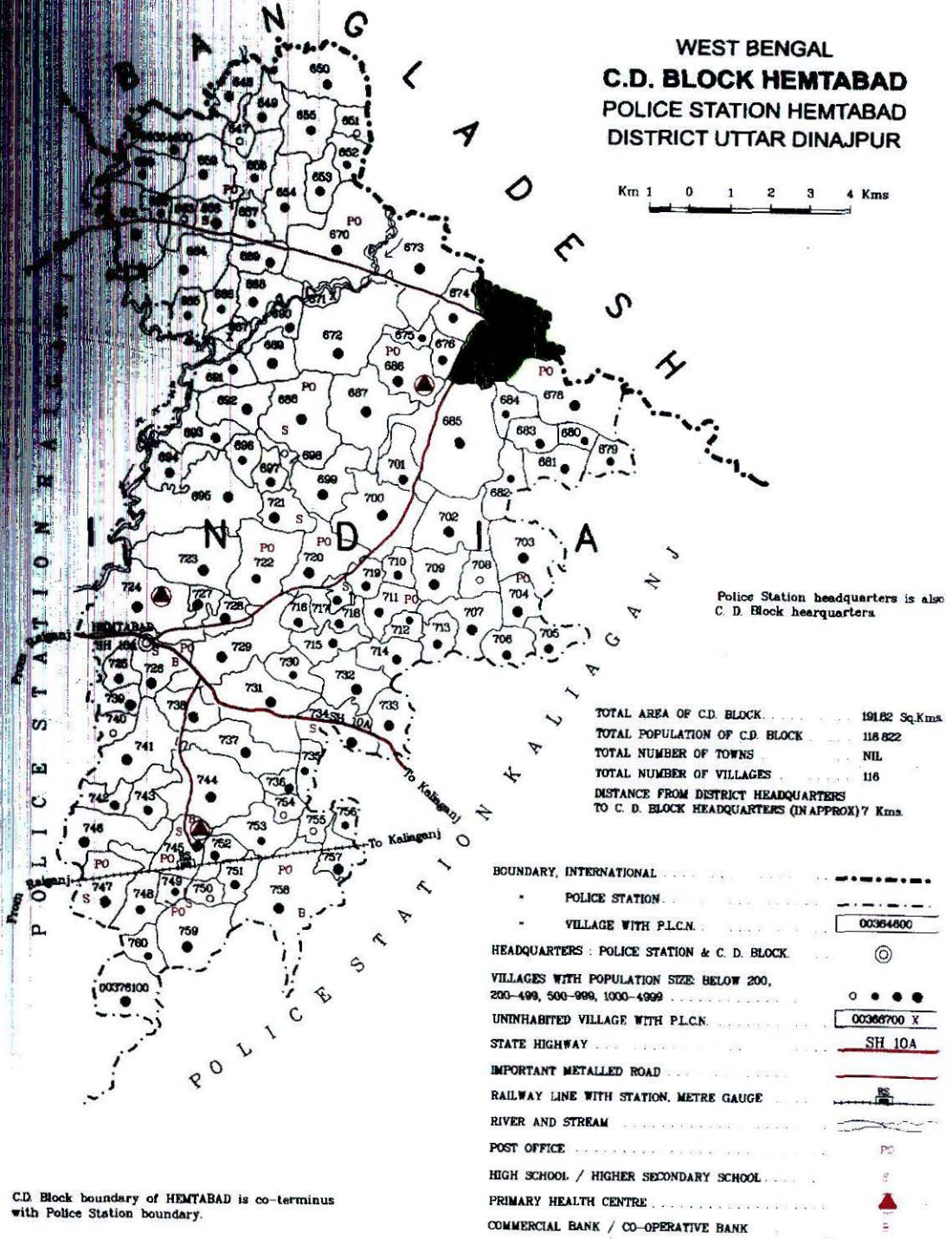
VILLAGES WITH POPULATION SIZE BELOW 200,
 2K-499, 500-999, 1000-4999, 5000 & ABOVE

UNINHABITED VILLAGE WITH P.L.C.N.	00363700 X
URBAN AREA WITH LOCATION CODE NUMBER	X
STATE HIGHWAY	SH 10A
IMPORTANT METALLED ROAD	
UNMETALLED AND OTHER ROADS	
RAILWAY LINE WITH STATION, METRE GAUGE	
RIVER AND STREAM	
POST OFFICE	PO
HIGH SCHOOL / HIGHER SECONDARY SCHOOL	S
PRIMARY HEALTH CENTRE	PHC
COMMERCIAL BANK / CO-OPERATIVE BANK	B

MAP : 4

WEST BENGAL
C.D. BLOCK HEMTABAD
POLICE STATION HEMTABAD
DISTRICT UTTAR DINAJPUR

Km 1 0 1 2 3 4 Kms



C.D. Block boundary of HEMTABAD is co-terminus with Police Station boundary.

MAP : 5

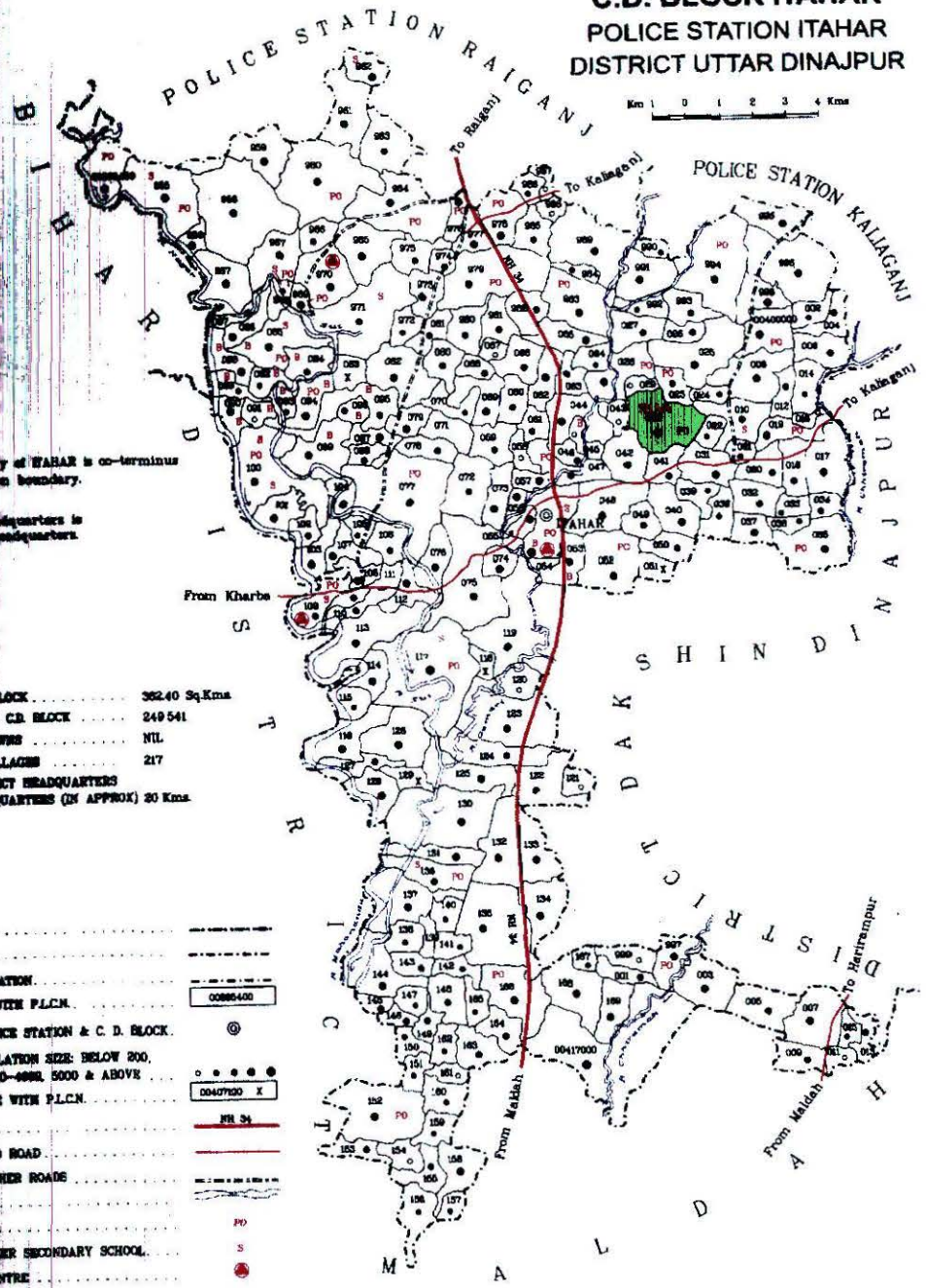
INDIA
WEST BENGAL
C.D. BLOCK ITAHAR
POLICE STATION ITAHAR
DISTRICT UTTAR DINAJPUR



The BLOCK boundary of ITAHAR is co-terminus with Police Station boundary.
Police Station headquarters is at Itahar. B. Block headquarters.

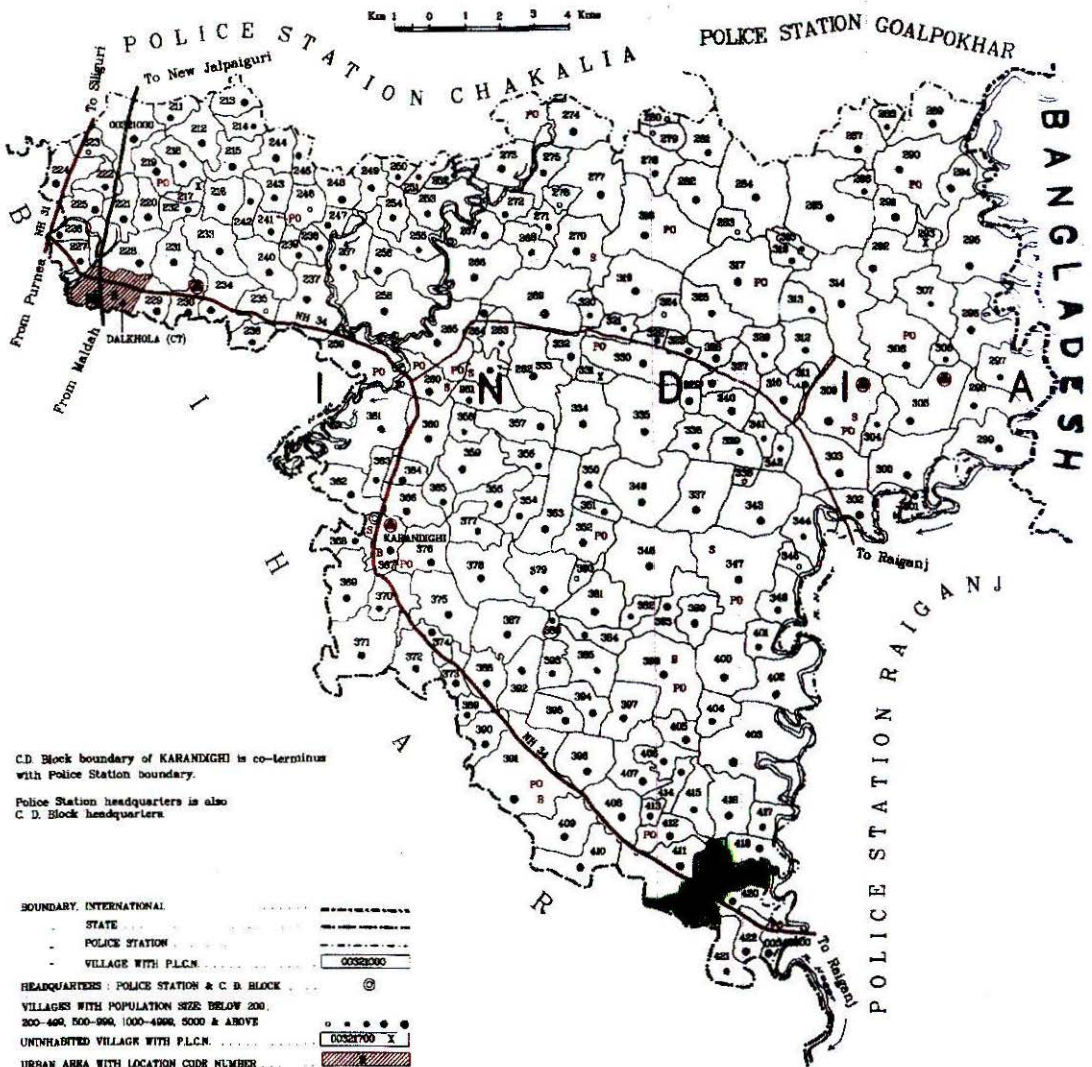
AREA OF C.D. BLOCK 362.40 Sq.Kms
POPULATION OF C.D. BLOCK 249 541
NUMBER OF TOWNS NIL
NUMBER OF VILLAGES 217
DISTANCE FROM DISTRICT HEADQUARTERS 20 Kms
DISTANCE FROM B. BLOCK HEADQUARTERS (IN APPROX) 20 Kms.

- | | |
|---------------------------------------------|-----------|
| BOUNDARY, STATE | ----- |
| DISTRICT | ----- |
| POLICE STATION | ----- |
| VILLAGE WITH P.L.C.N. | 00885-400 |
| HEADQUARTERS : POLICE STATION & C. D. BLOCK | ⊙ |
| VILLAGES WITH POPULATION SIZE: BELOW 200 | ○ |
| 200-500 500-1000 1000-5000 & ABOVE | ● ● ● ● ● |
| UNINCORPORATED VILLAGE WITH P.L.C.N. | 0047700 X |
| NATIONAL HIGHWAY | NR 34 |
| IMPORTANT METALLED ROAD | ————— |
| UNMETALLED AND OTHER ROAD | ----- |
| RIVER AND STREAM | ~~~~~ |
| POST OFFICE | PO |
| HIGH SCHOOL / HIGHER SECONDARY SCHOOL | S |
| HEALTH CENTRE | ● |
| COMMERCIAL BANK / CO-OPERATIVE BANK | B |



MAP : 6

WEST BENGAL
C.D. BLOCK KARANDIGHI
POLICE STATION KARANDIGHI
DISTRICT UTTAR DINAJPUR



C.D. Block boundary of KARANDIGHI is co-terminus with Police Station boundary.

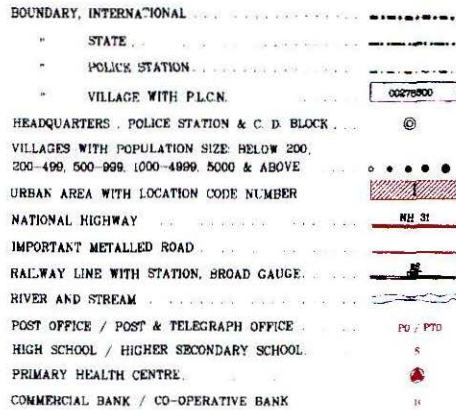
Police Station headquarters is also C. D. Block headquarters.

BOUNDARY, INTERNATIONAL	-----
STATE	-----
POLICE STATION	-----
VILLAGE WITH P.L.C.M.	00521900
HEADQUARTERS : POLICE STATION & C. D. BLOCK	⊙
VILLAGES WITH POPULATION SIZE: BELOW 200.	○
200-400, 500-999, 1000-4999, 5000 & ABOVE	●
UNINHABITED VILLAGE WITH P.L.C.M.	○
URBAN AREA WITH LOCATION CODE NUMBER	▨
NATIONAL HIGHWAY	NH 31
IMPORTANT METALLED ROAD	---
RAILWAY LINE WITH STATION, BROAD GAUGE	—+—
RIVER AND STREAM	~~~~~
POST OFFICE	PO
HIGH SCHOOL / HIGHER SECONDARY SCHOOL	S
PRIMARY HEALTH CENTRE	⊙
COMMERCIAL BANK / CO-OPERATIVE BANK	B

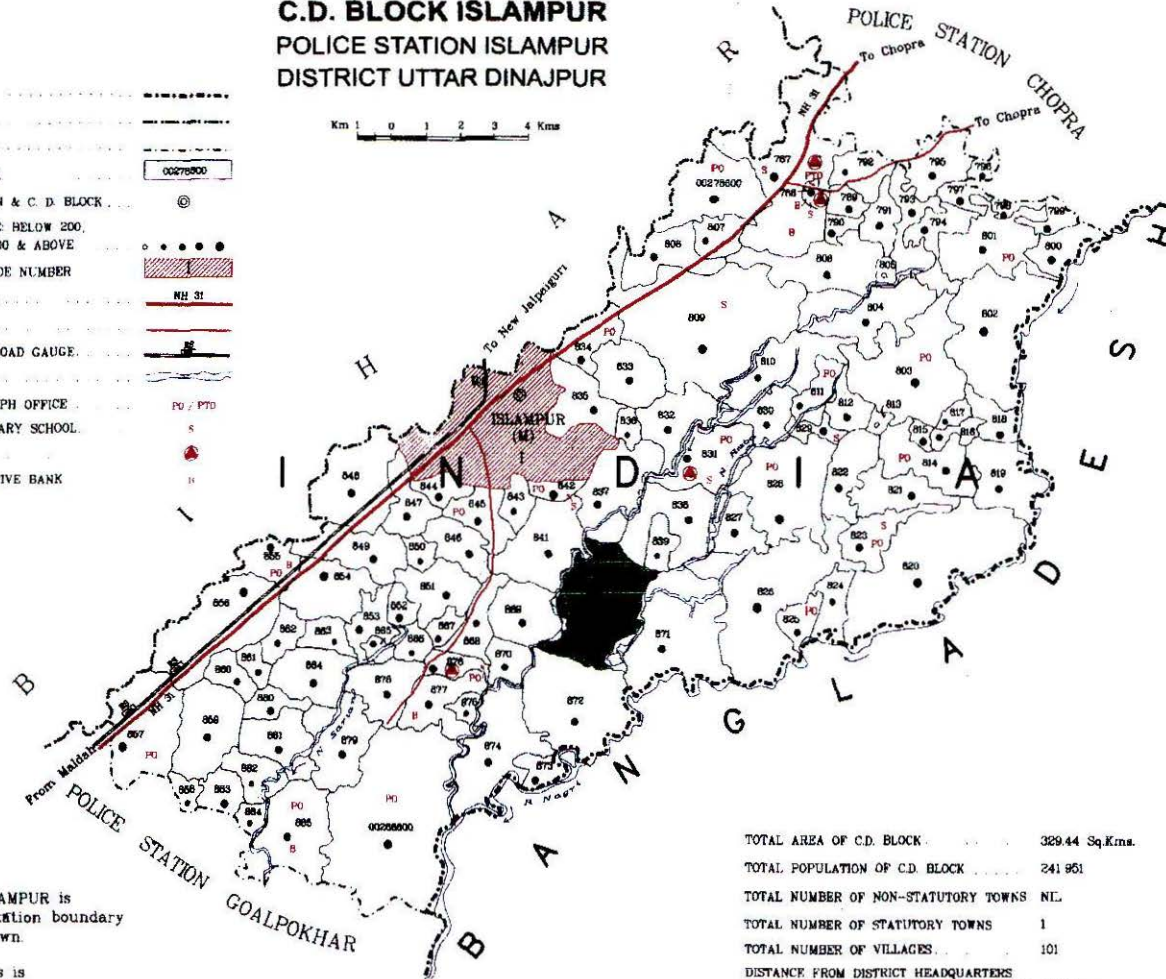
TOTAL AREA OF C.D. BLOCK	390.52 Sq. Km
TOTAL POPULATION OF C.D. BLOCK	318 863
TOTAL NUMBER OF NON-STATUTORY TOWNS	1
TOTAL NUMBER OF STATUTORY TOWNS	NIL
TOTAL NUMBER OF VILLAGES	214
DISTANCE FROM DISTRICT HEADQUARTERS TO C. D. BLOCK HEADQUARTERS (IN APPROX)	35.5 km

MAP : 7

WEST BENGAL
C.D. BLOCK ISLAMPUR
 POLICE STATION ISLAMPUR
 DISTRICT UTTAR DINAJPUR



Km 1 0 1 2 3 4 Kms

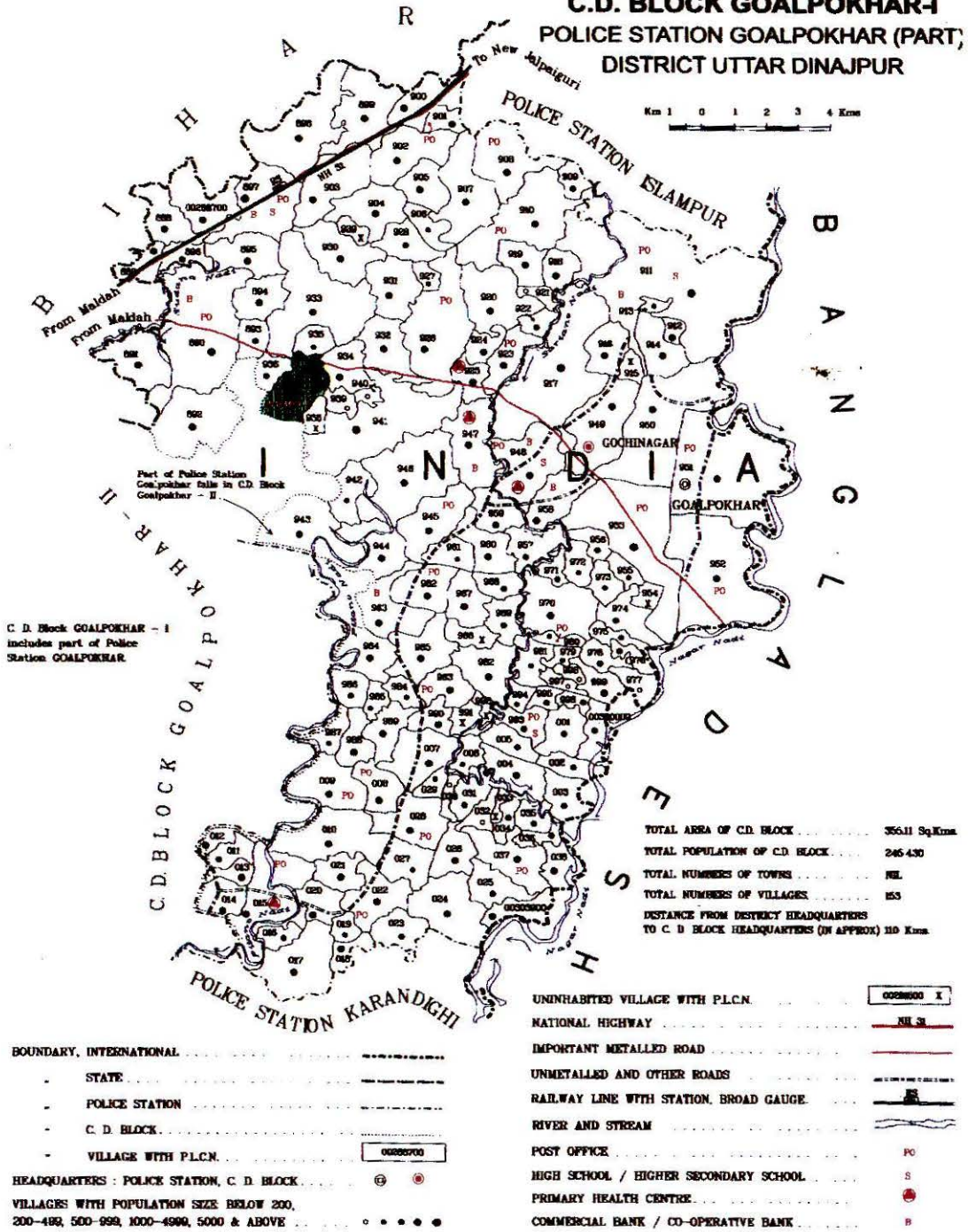


TOTAL AREA OF C.D. BLOCK	329.44 Sq.Kms.
TOTAL POPULATION OF C.D. BLOCK	241 951
TOTAL NUMBER OF NON-STATUTORY TOWNS	NL
TOTAL NUMBER OF STATUTORY TOWNS	1
TOTAL NUMBER OF VILLAGES	101
DISTANCE FROM DISTRICT HEADQUARTERS TO C. D. BLOCK HEADQUARTERS (INAPPROX)	110 Kms

C.D. Block boundary of ISLAMPUR is co-terminus with Police Station boundary excluding the Statutory town.

Police Station headquarters is also C. D. Block headquarters.

WEST BENGAL
C.D. BLOCK GOALPOKHAR-I
POLICE STATION GOALPOKHAR (PART),
DISTRICT UTTAR DINAJPUR



MAP : 9