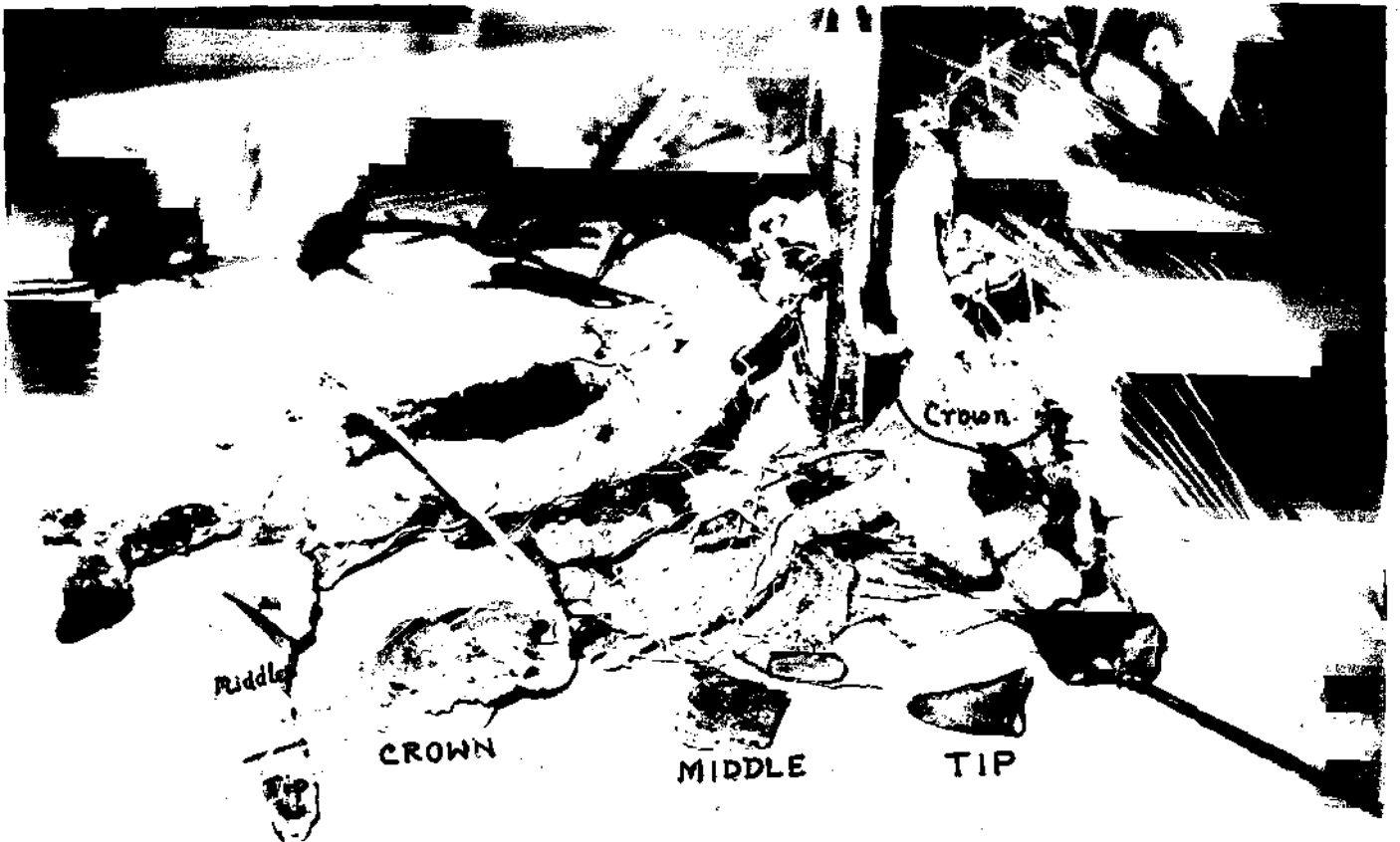


: ABBREVIATIONS :

|                     |   |
|---------------------|---|
| CIMAP               | Central Institute of Medicinal & Aromatic Plants. |
| C.D.                | Critical difference.                              |
| C.S.I.R.            | Council of Scientific & Industrial Research.      |
| C G R               | Crop Growth Rate.                                 |
| D.C.O.M.P.          | Directorate of Cinchona & Other Medicinal Plants. |
| DM                  | Dry Matter.                                       |
| Fig.                | Figure.   |
| ha                  | hectare   |
| lbs/cm <sup>2</sup> | Pounds/square centimetre.                         |
| K                   | Potassium.  |
| Kg.                 | Kilogramme  |
| LA                  | Leaf Area.  |
| LAI                 | Leaf area index.                                  |
| ml                  | Mililitre.  |
| m                   | metre.  |
| MT                  | Metric tonne.                                     |
| N                   | Nitrogen.   |
| NAR                 | Net Assimilation Rate.                            |
| P                   | Phosphorus.                                       |
| PRC                 | Plants Raised from Crown portion.                 |
| PRM                 | Plants Raised from Middle Portion.                |

|       |                                 |
|-------|---------------------------------|
| PRT   | Plants Raised from Tip Portion. |
| RLGR  | Relative Leaf Growth Rate.      |
| ' r ' | Co-efficient of Co-rrelation.   |
| S.E.  | Standard error.                 |
| TN    | Total Nitrogen                  |
| W/V   | Weight/Volume                   |



Dioscorea floribunda Yam ( Harvested after 720 days).



( PRC )

Plants Raised From Crown.  
( 1, 2, 3, 4, 5 )

( PRM )

Plants Raised From Middle.  
( 6, 7, 8, 9, 10 )

( PRT )

Plants Raised From Tip.  
( 11, 12, 13, 14, 15 )