

PLATE

PLATE I

Fig. 1 - Microtritia longisetosus sp. nov.
(Lateral view)

Fig. 2 - Microtritia longisetosus sp. nov.
(Ventral view)

Fig. 3 - Malacoangelia assamica sp. nov.
(Dorsal view)

Fig. 4 - Malacoangelia assamica sp. nov.
(Ventral view)

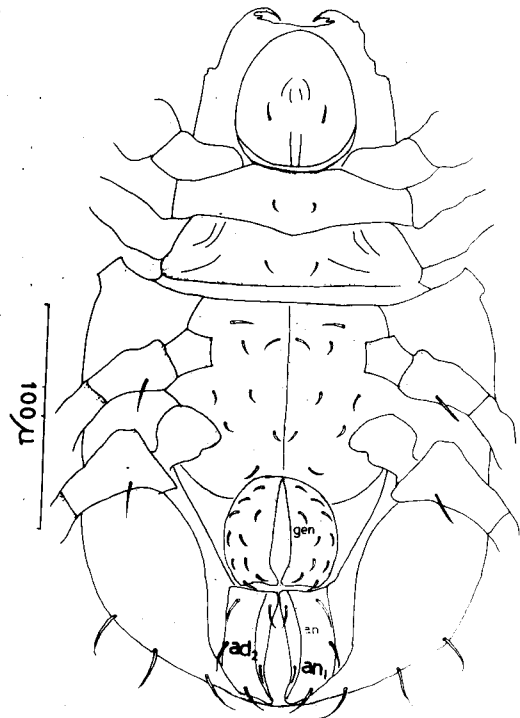
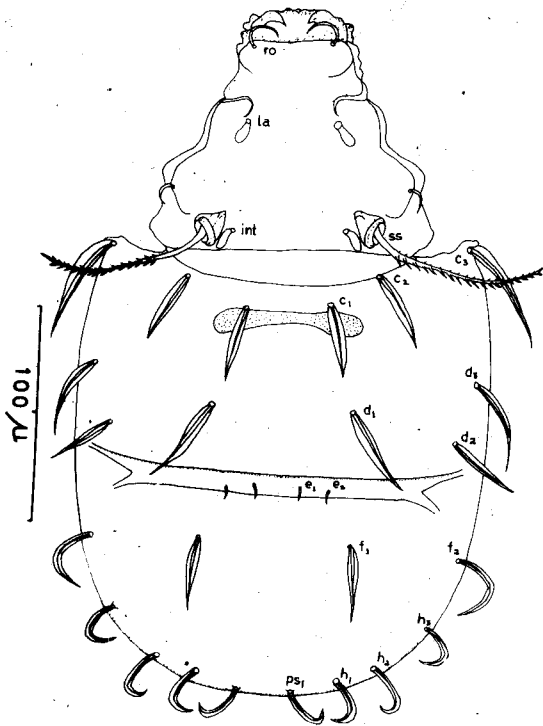
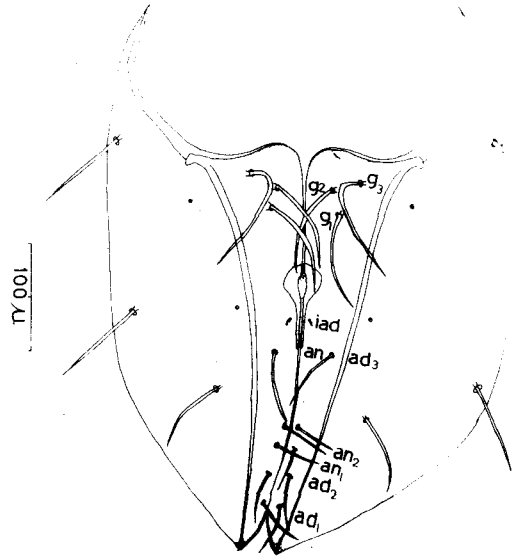
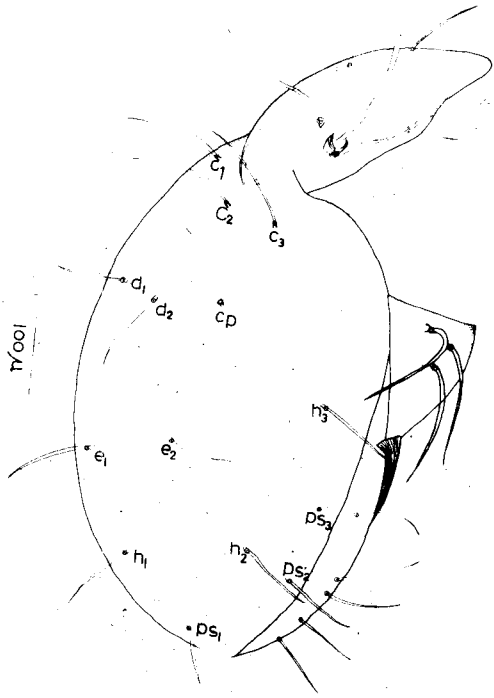


PLATE II

Fig. 5 - Cosmochthonius assamensis sp. nov.
(Dorsal view)

Fig. 6 - Cosmochthonius assamensis sp. nov.
(Ventral view)

Fig. 7 - Mixacarus simplisetosus sp. nov.
(Dorsal view)

Fig. 8 - Mixacarus simplisetosus sp. nov.
(Ventral view)

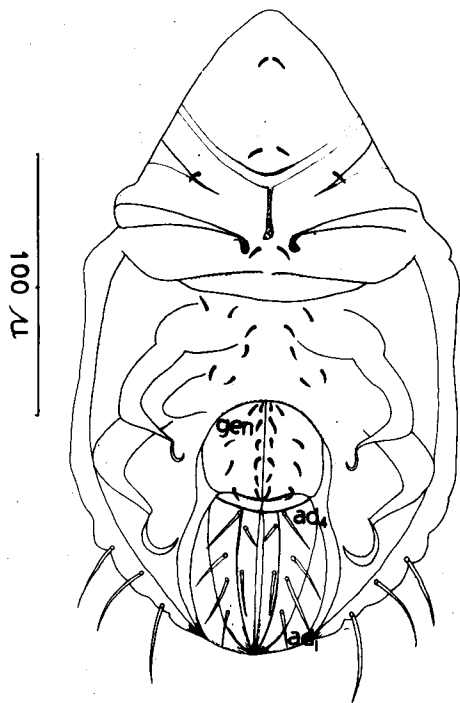
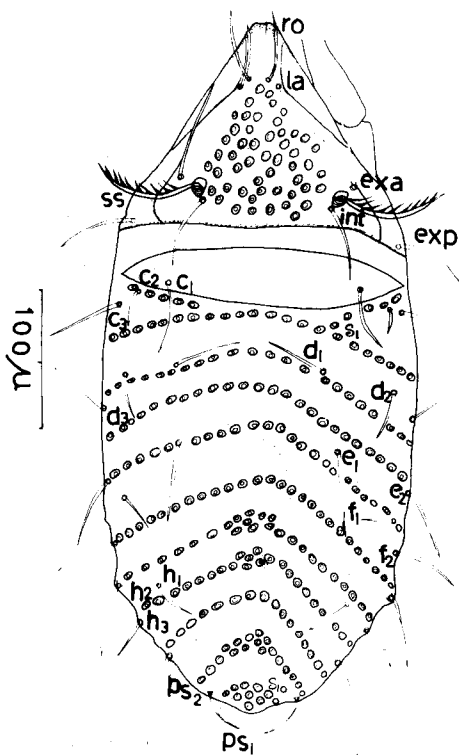
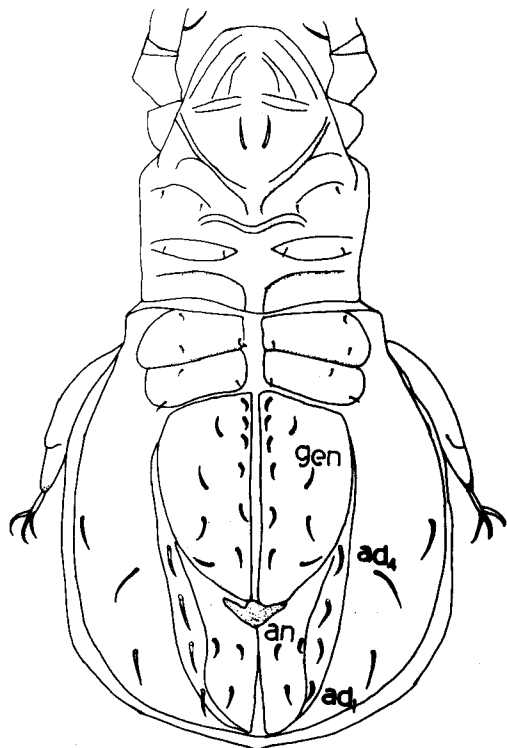
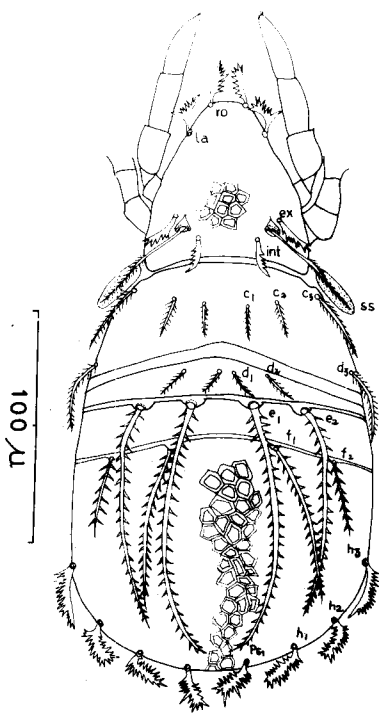


PLATE III

Fig. 9 - Malaconothrus rekhai sp. nov.
(Dorsal view)

Fig. 10 - Malaconothrus rekhai sp. nov.
(Ventral view)

Fig. 11 - Microtegeus palmatus sp. nov.
(Dorsal view)

Fig. 12 - Microtegeus palmatus sp. nov.
(Ventral view)

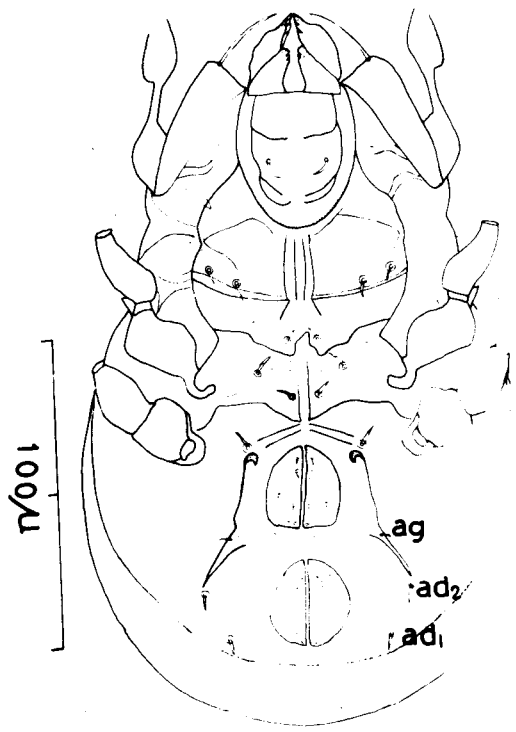
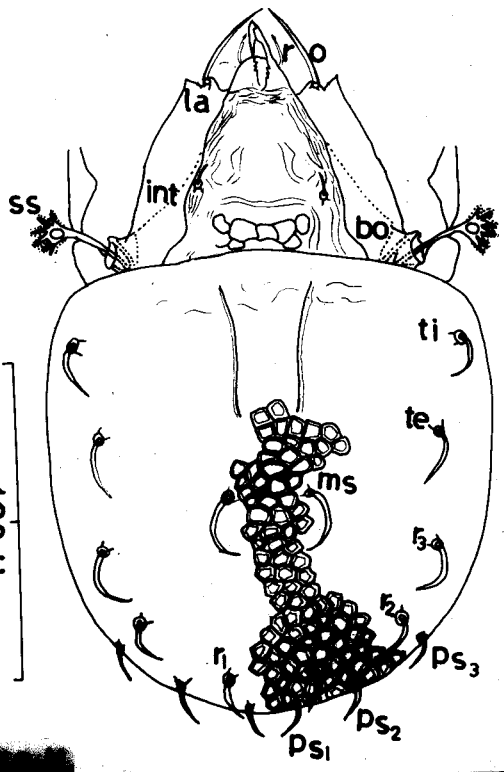
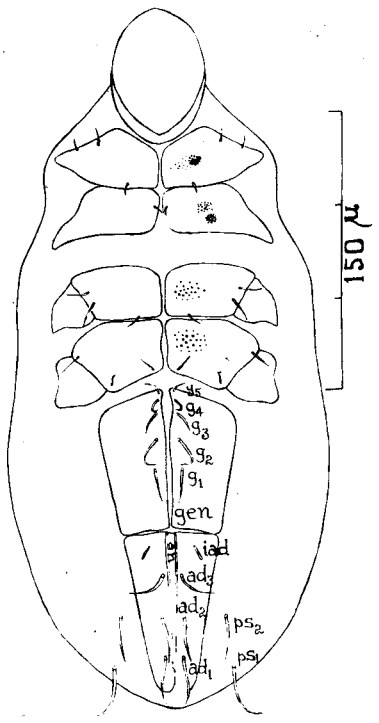
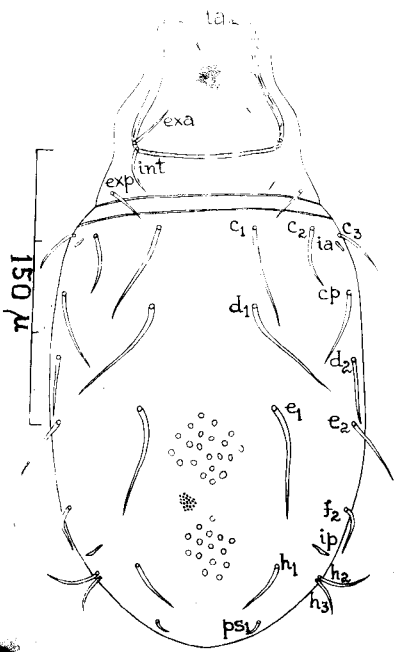


PLATE IV

- Fig. 13 - Eremulus signifer sp. nov. (Dorsal view)
- Fig. 14 - Eremulus signifer sp. nov. (Ventral view)
- Fig. 15 - Indobasilobelba barbata gen nov. et sp. nov.
(Dorsal view)
- Fig. 16 - Indobasilobelba barbata gen nov. et sp. nov.
(Ventral view)

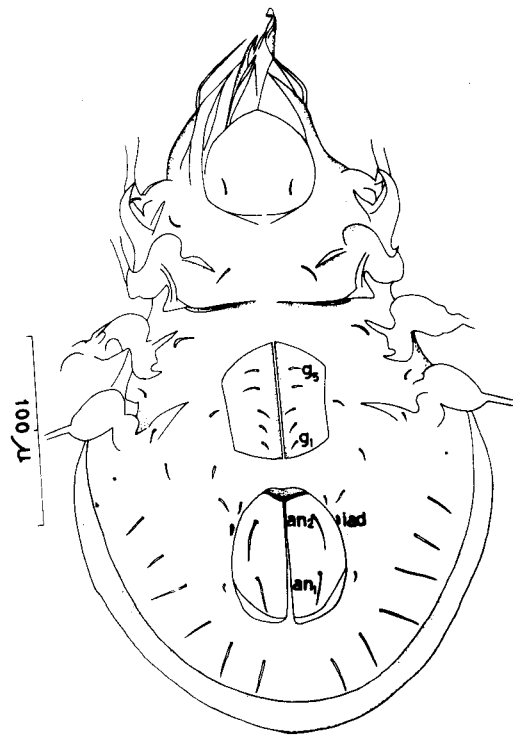
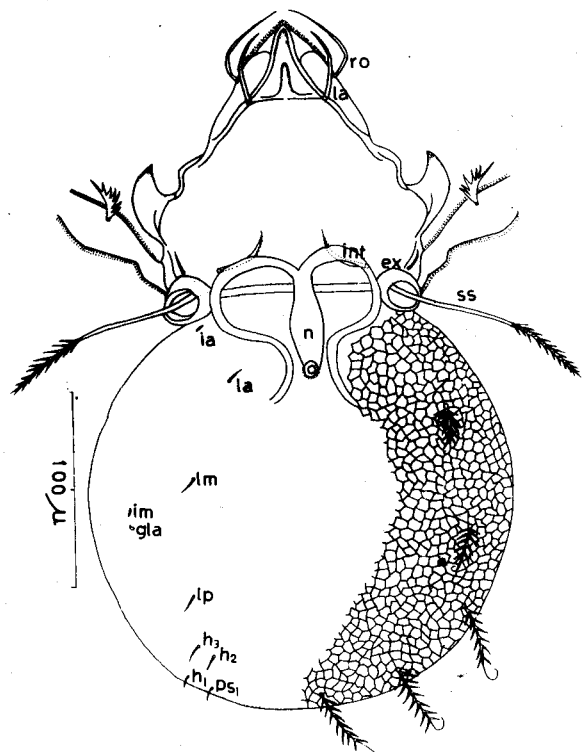
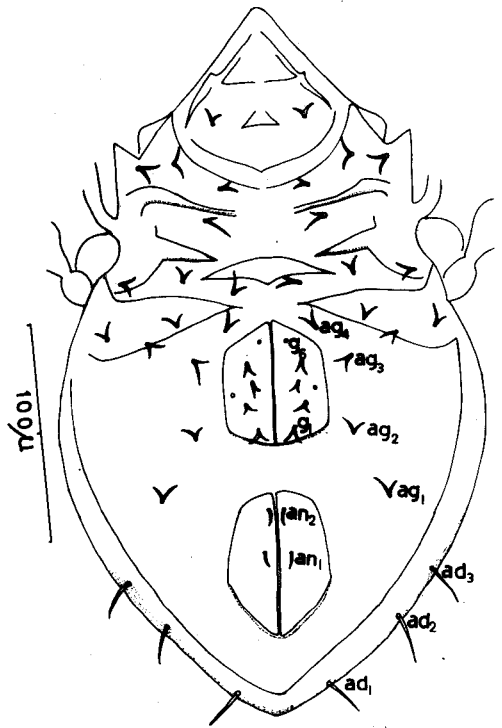
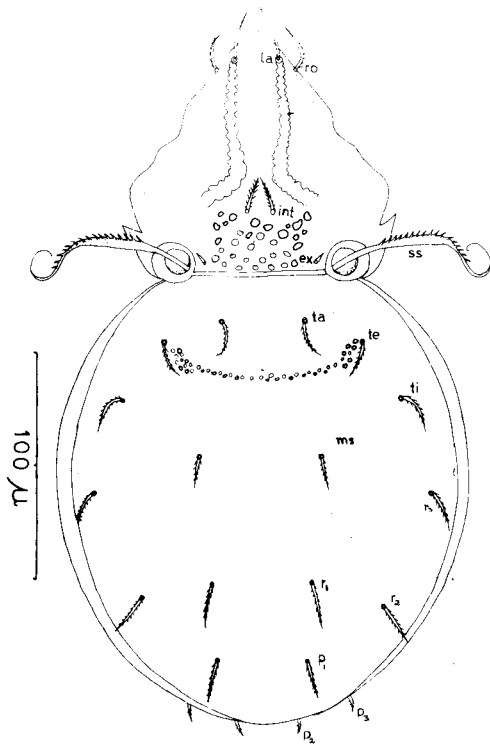


PLATE V

- Fig. 17 - Exuvium of Indobasilobelba barbata
gen nov. et. sp. nov.
- Fig. 18a- Rostrum of Indobasilobelba barbata
gen. nov. et. sp. nov. with
Chelicerae. (Dorsal view)
- Fig. 18b- Rostrum of Indobasilobelba barbata
gen. nov. et. sp. nov. with
Chelicerae (Ventral view)
- Fig. 19 - Tibia and tarsus of Indobasilobelba
barbata gen nov. et. sp. nov.

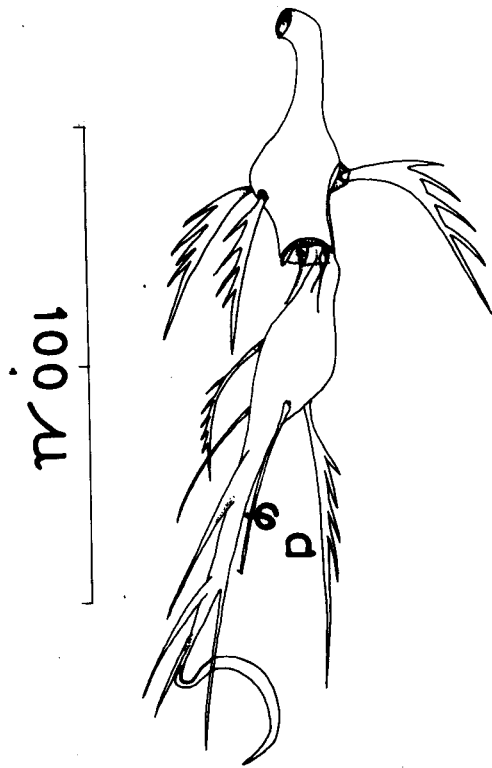
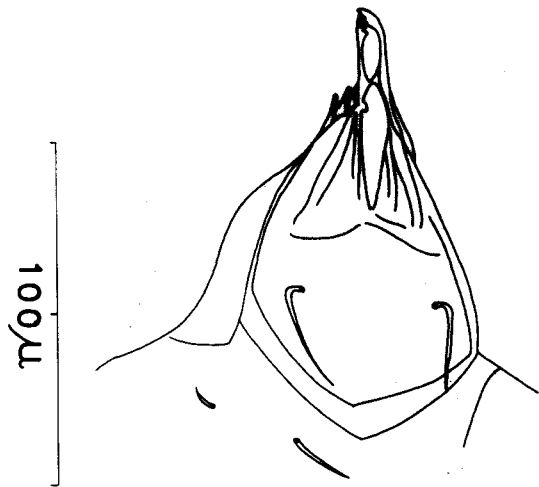
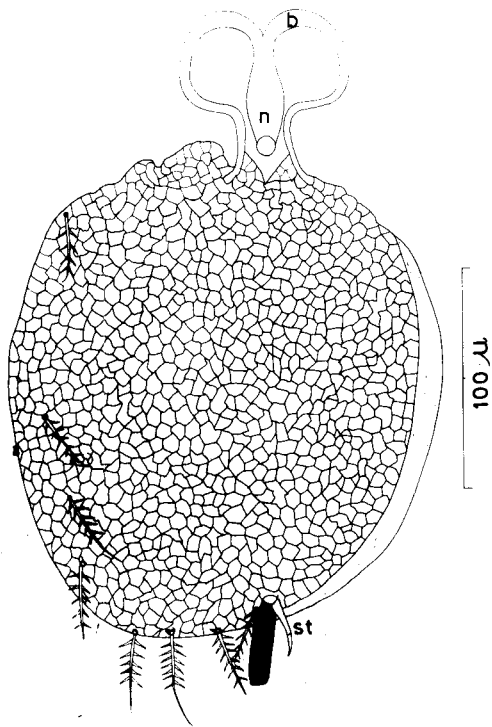
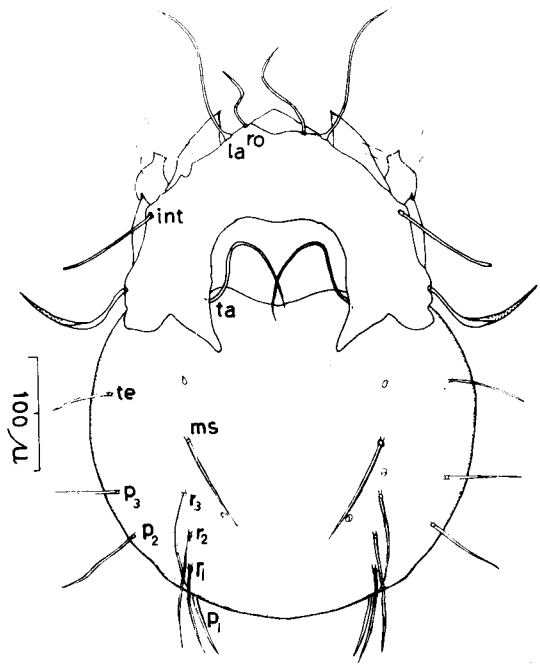
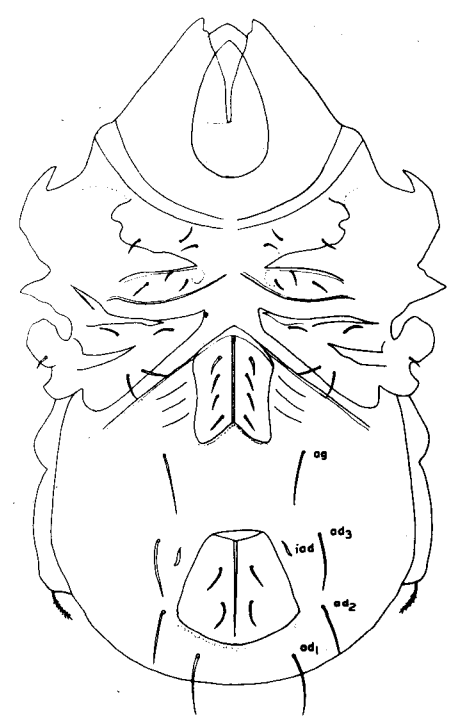


PLATE VI

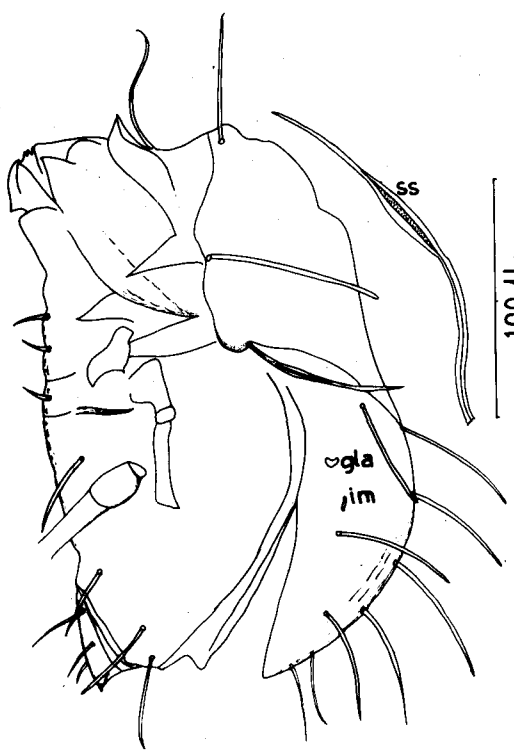
- Fig. 20 - Leobodes akii sp. nov. (Dorsal view)
Fig. 21 - Leobodes akii sp. nov. (Ventral view)
Fig. 22 - Leobodes akii sp. nov. (Lateral view)
Fig. 23 - Megalotocepheus piscitectus sp. nov.
(Dorsal view)



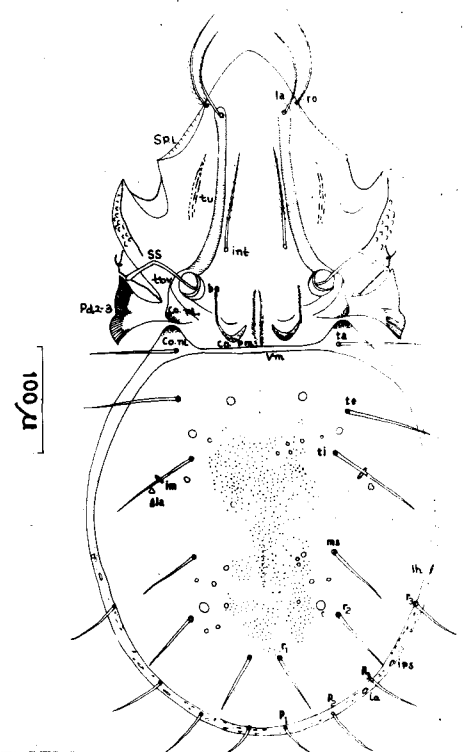
100 μ



100 μ



100 μ



100 μ

PLATE VII

Fig. 24 - Megalotocampus piscitectus sp. nov.
(Ventral view)

Fig. 25 - Oppiella breviseta sp. nov.
(Dorsal view)

Fig. 26 - Oppiella breviseta sp. nov.
(Ventral view)

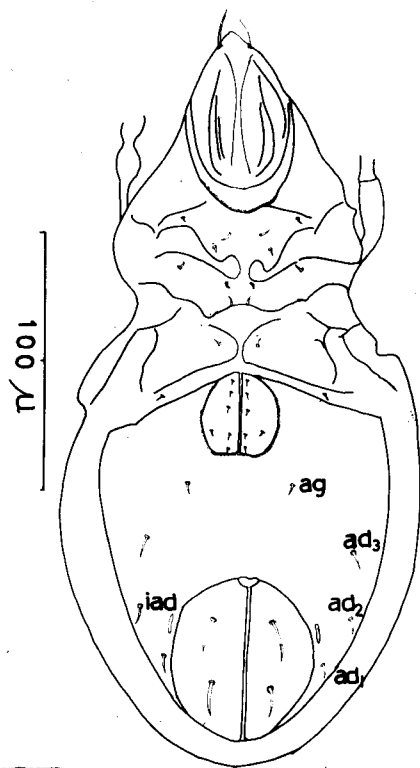
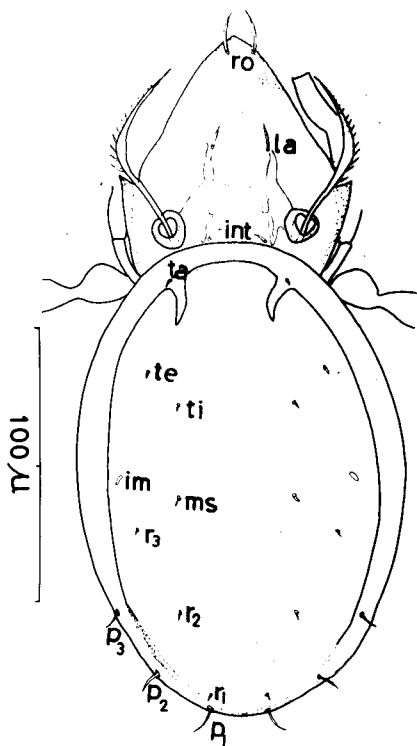
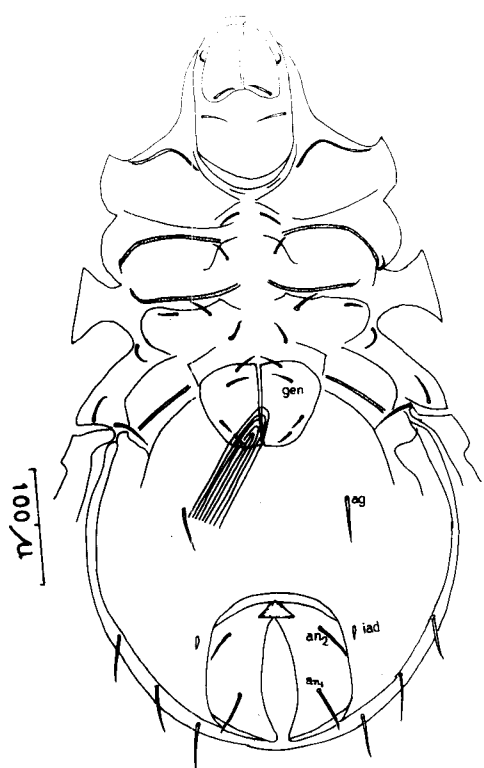
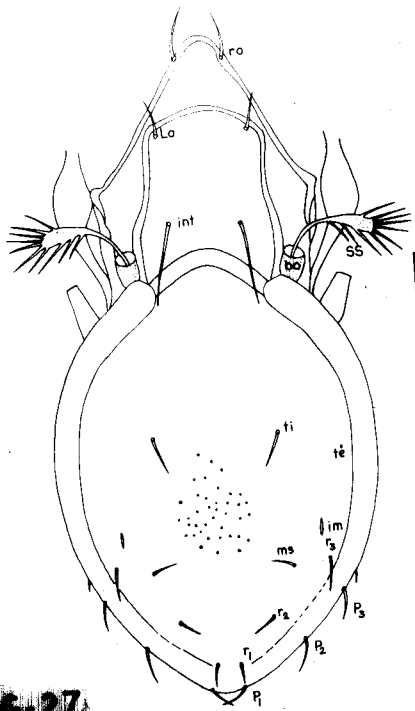


PLATE VIII

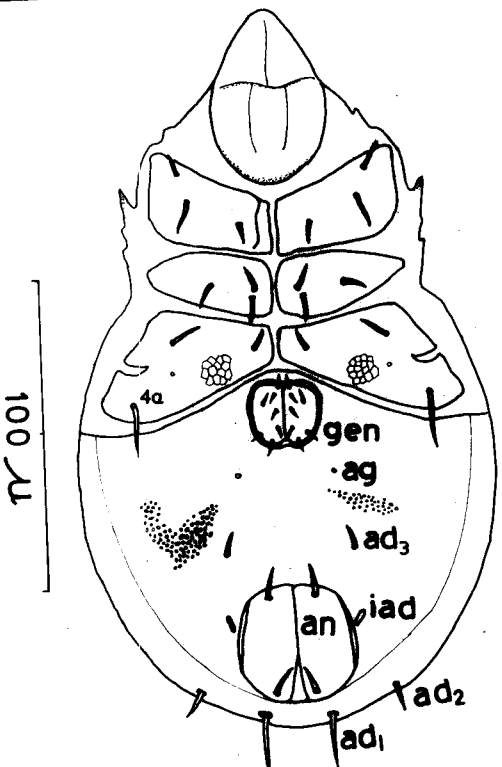
Fig. 27 - Brachioppiella assamica sp. nov.
(Dorsal view)

Fig. 28 - Brachioppiella assamica sp. nov.
(Ventral view)

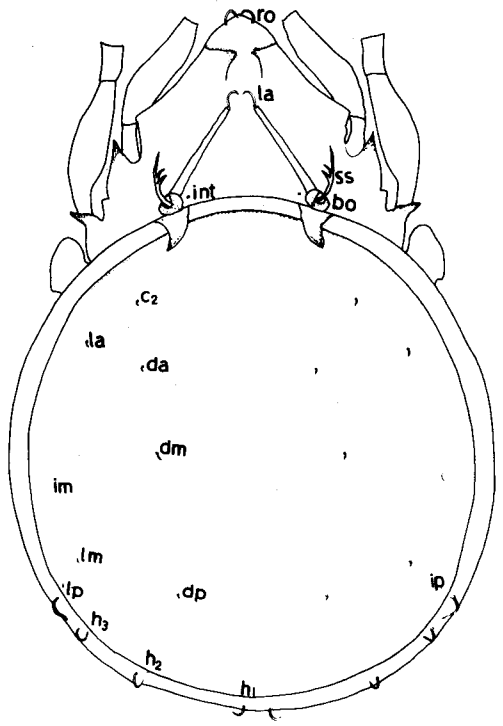
Fig. 29 - Hydrozetes brevicurva sp. nov.
(Dorsal view)



100 μ



100 μ



100 μ

PLATE IX

Fig. 30 - Hydrozetes brevicurva sp. nov.
(Ventral view)

Fig. 31 - Incabates minor sp. nov.
(Dorsal view)

Fig. 32 - Incabates minor sp. nov.
(Ventral view)

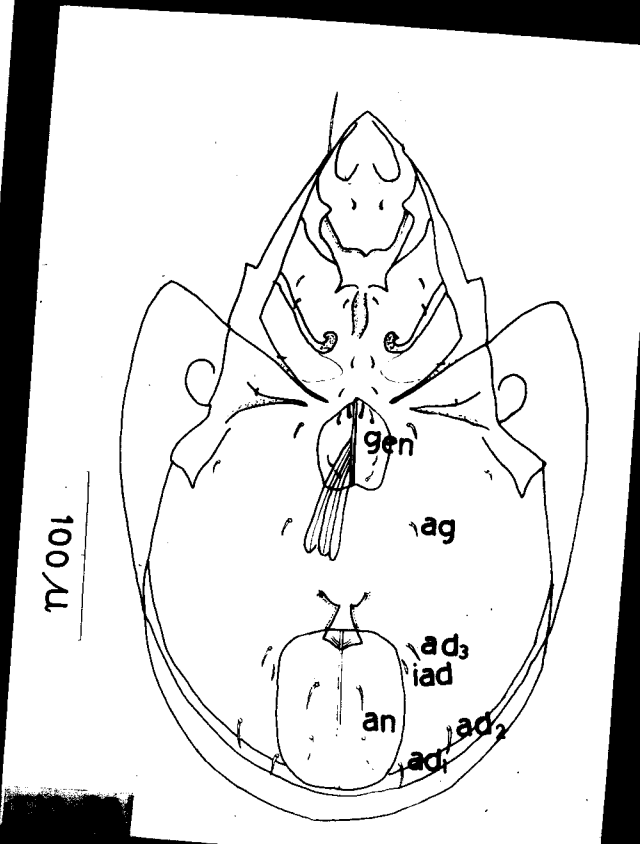
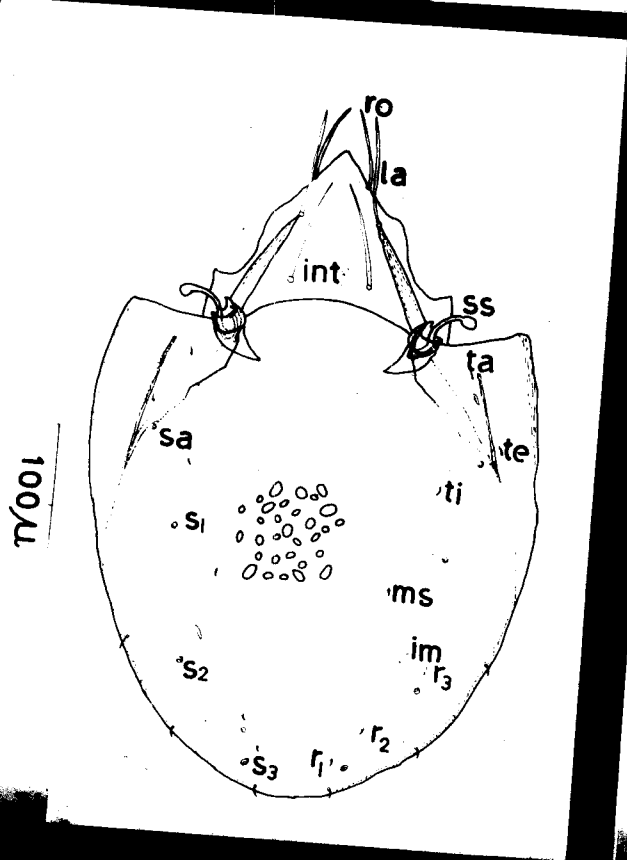
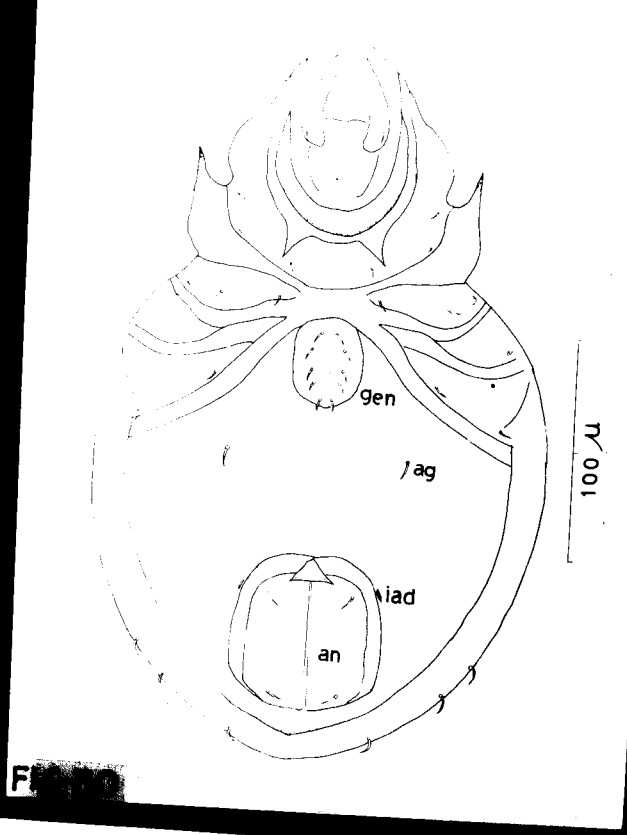


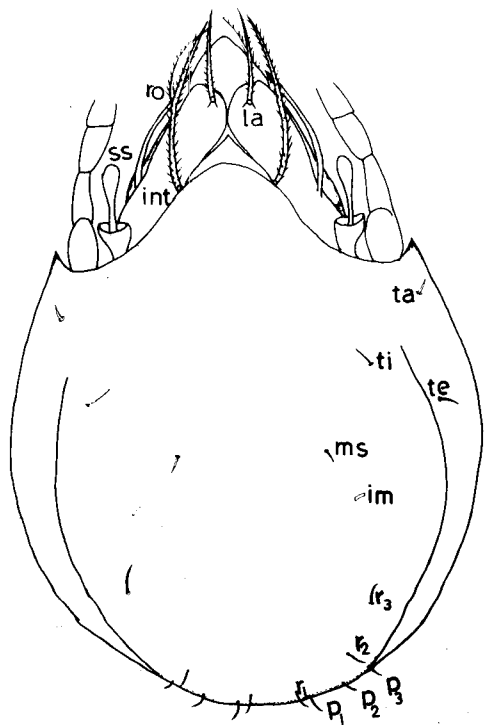
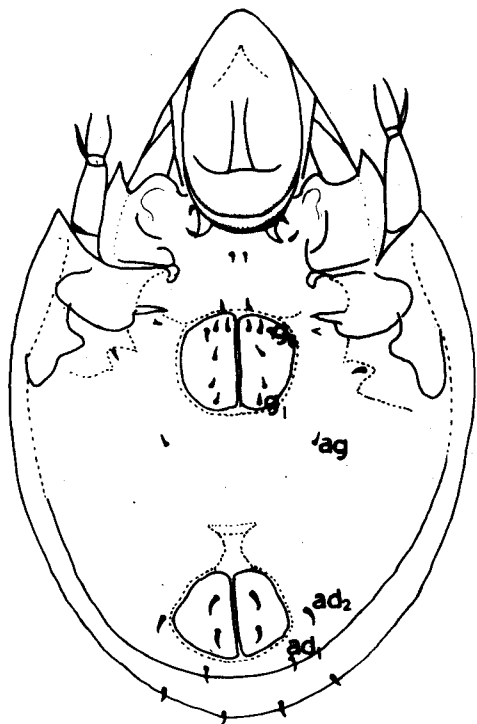
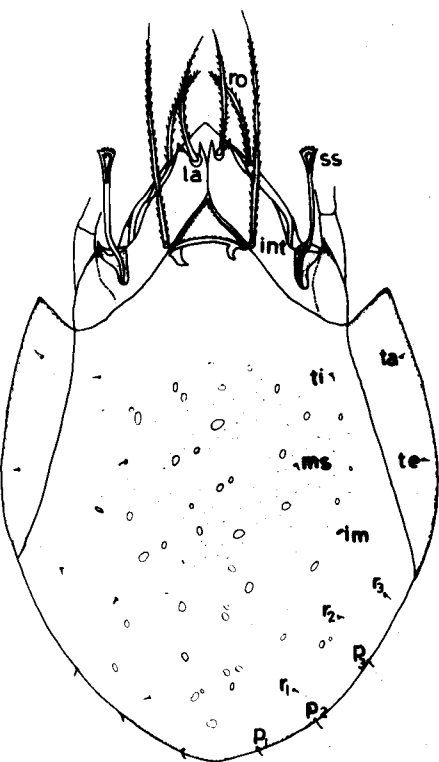
PLATE X

Fig. 33 - Lamellobates similis sp. nov.
(Dorsal view)

Fig. 34 - Lamellobates similis sp. nov.
(Ventral view)

Fig. 35 - Paralamellobates peniculatus sp. nov.
(Dorsal view)

Fig. 36 - Paralamellobates peniculatus sp. nov.
(Ventral view)

100 μ 100 μ 100 μ 100 μ 